

# SUOMEN VILJATEKNIKKOJEN SYYSKOKOUS 23.10.2007

## SADONKORJUUN LAATUTIETOJA

Mirja Kartio

Elintarviketurvallisuusvirasto Evira

# SADON MÄÄRÄ 2007

Tiken ennakkosatoarvio 31.8.07

**KOKONAIS SATO 4,044 mrd kg** (v. 2006 3,8 mrd kg)

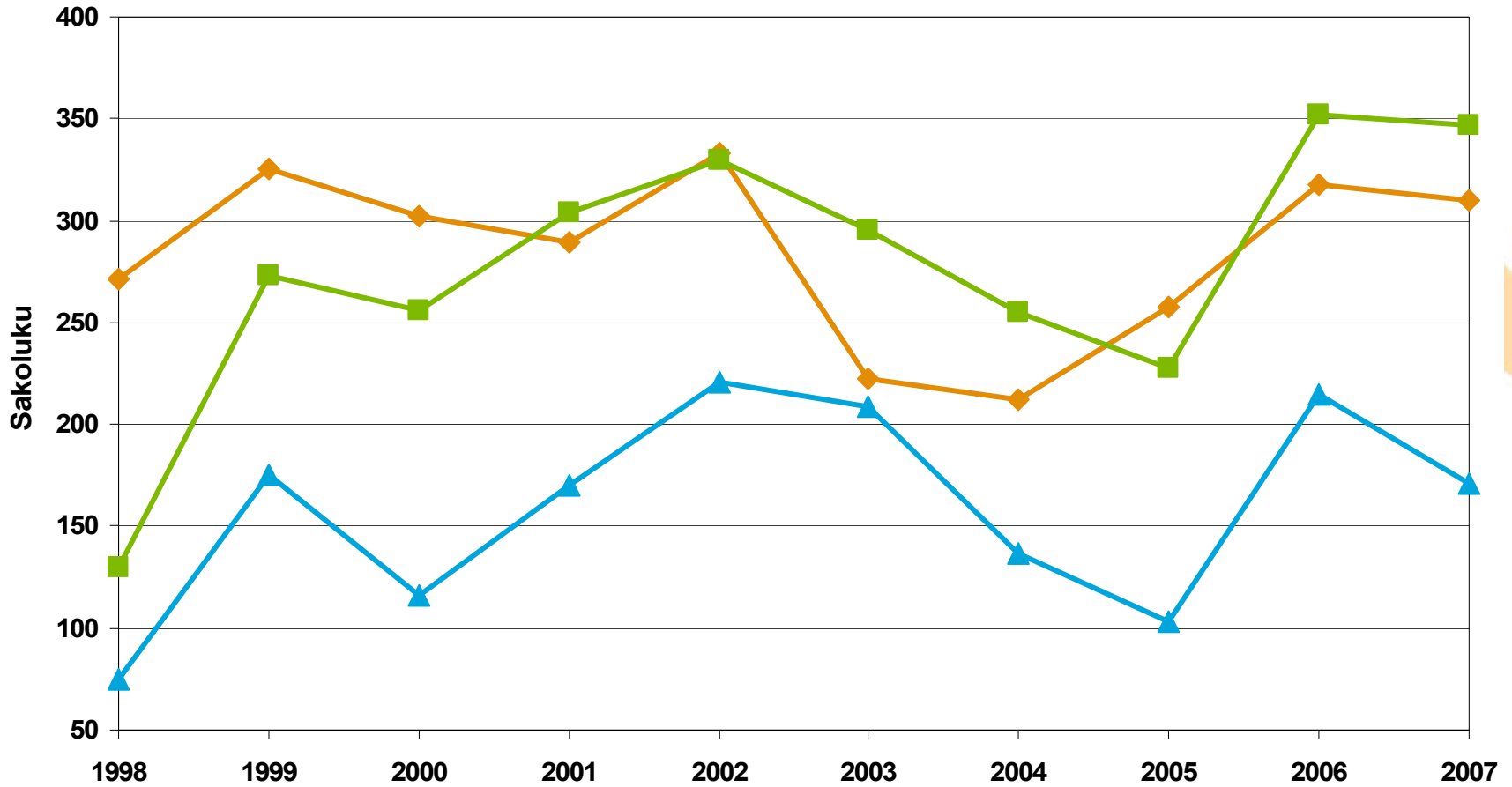
	<b>2007</b> (1000 tn)	<b>2006</b> (1000 tn)
■ <b>KEVÄTVEHNÄ</b>	<b>609</b>	<b>621</b>
■ <b>SYYSVEHNÄ</b>	<b>145</b>	<b>63</b>
■ <b>RUIS</b>	<b>89</b>	<b>51</b>
■ <b>OHRA</b>	<b>1895</b>	<b>1972</b>
■ <b>KAURA</b>	<b>1244</b>	<b>1029</b>

# SADON LAATU 2007

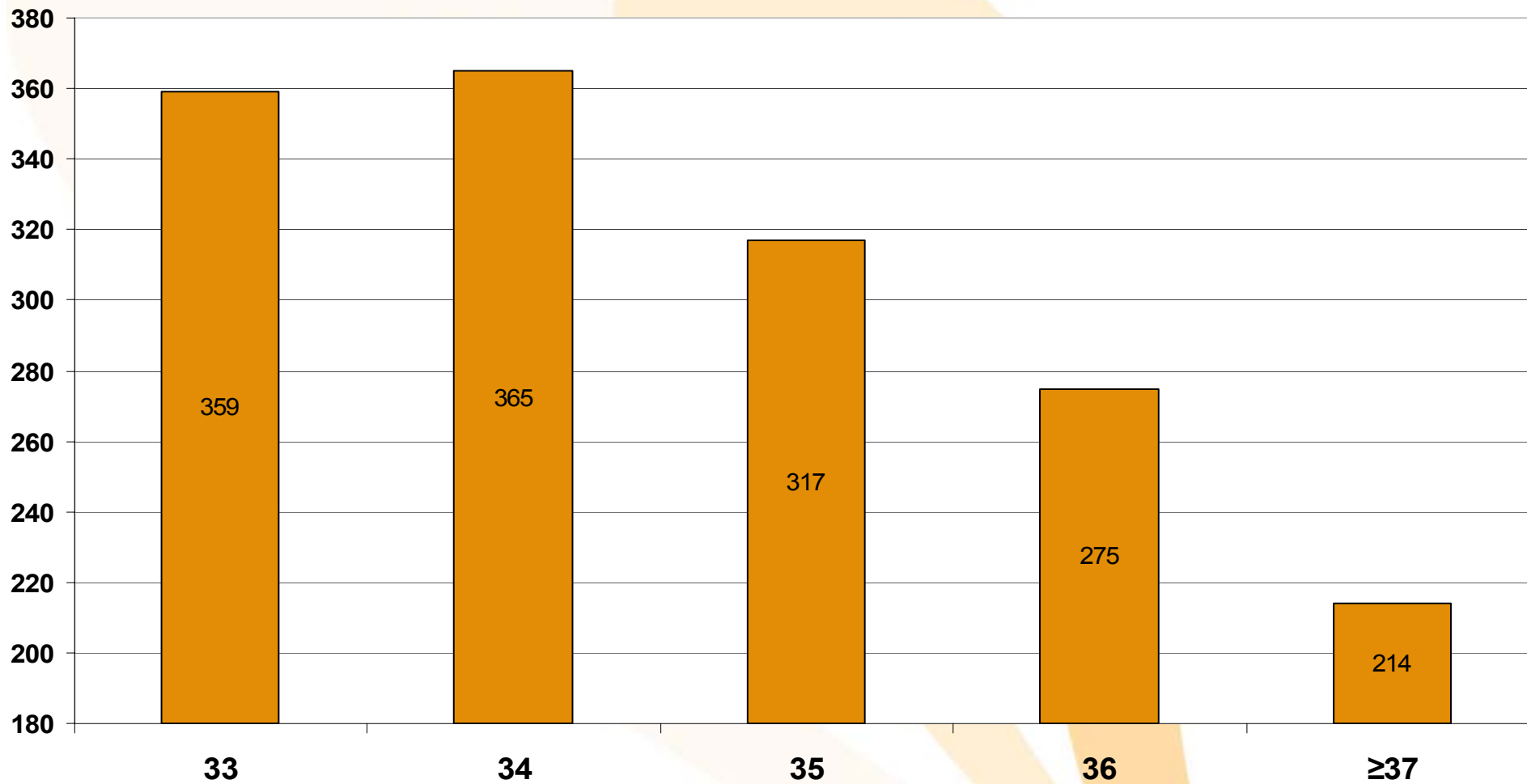
- **NÄYTTEITÄ** yht. **1 652**
- **VILJALAJIN MUKAAN**
  - Kevätvehnä 264
  - Syysvehnä 71
  - Ruis 81
  - Rehuohra 402
  - Mallasohra 336
  - Kaura 498
- **ANALYYSEJA** **18 889**

# SAKOLUKU - FALLTAL - FALLING NUMBER

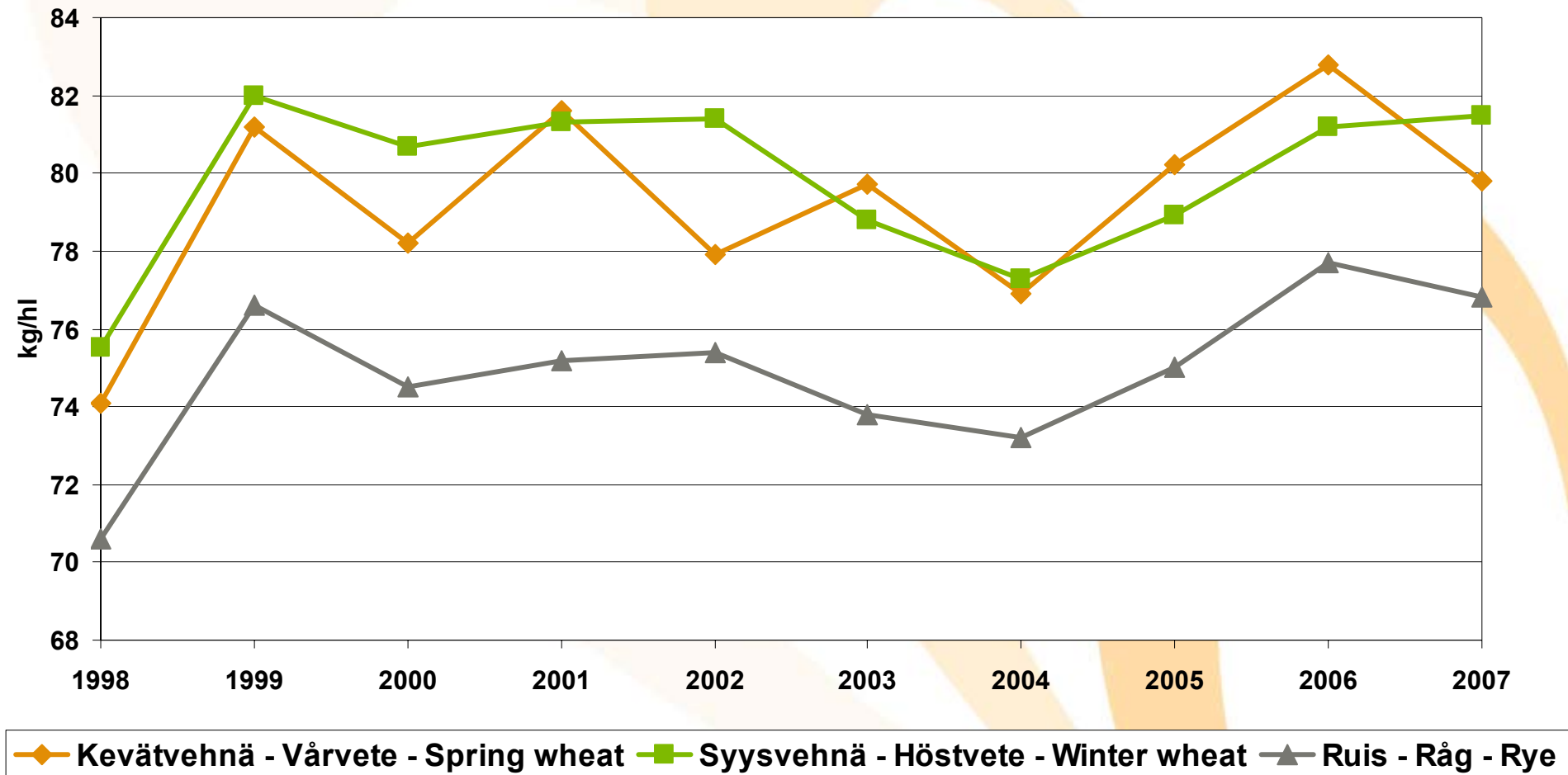
## 1998 - 2007



# KEVÄTVEHNÄN SAKOLUKU KORJUUVIIKOTTAIN 2007

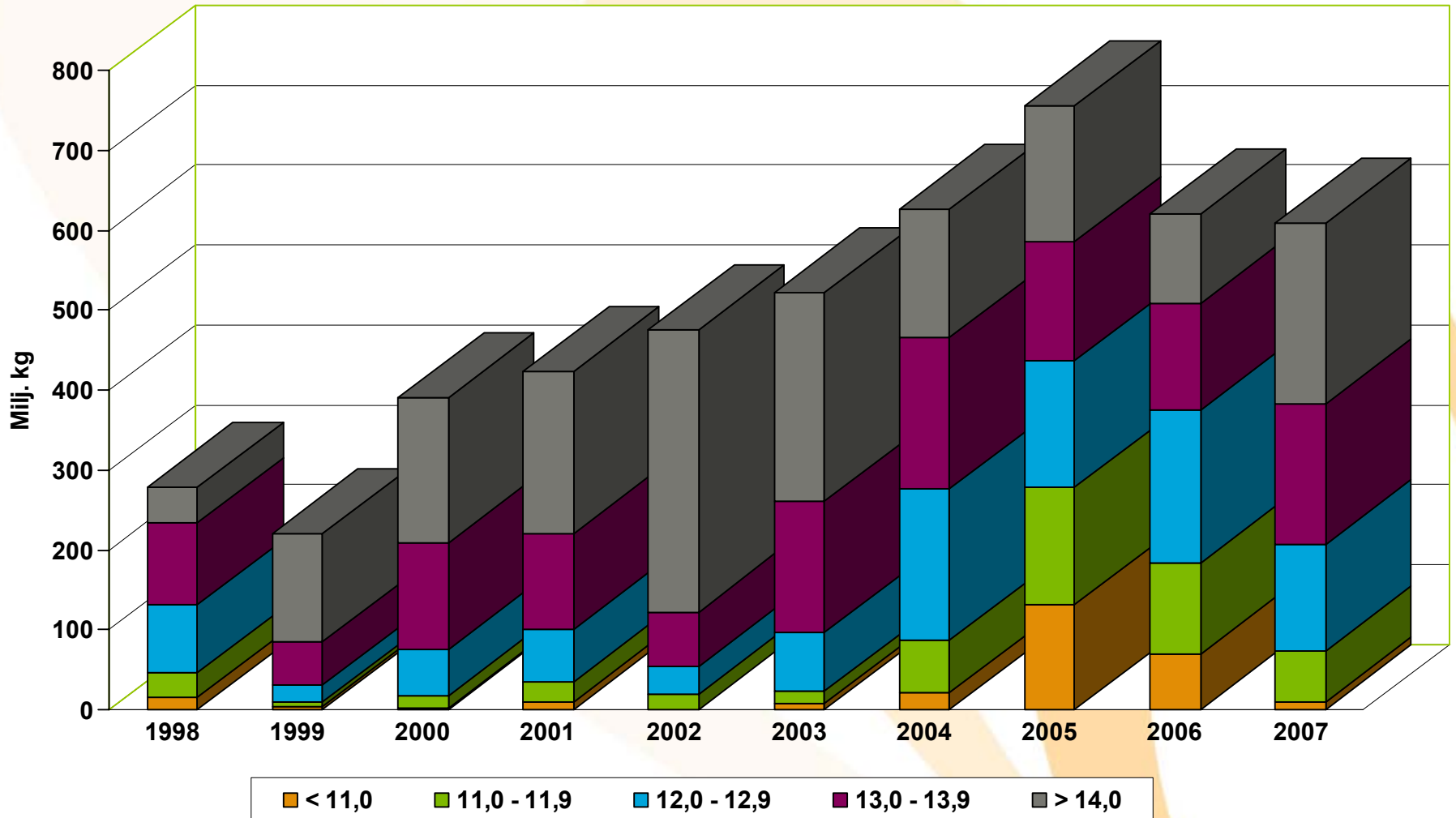


# HEHTOLITRANPAINO - HEKTOLITERVIKT - HL-WEIGHT 1998 - 2007

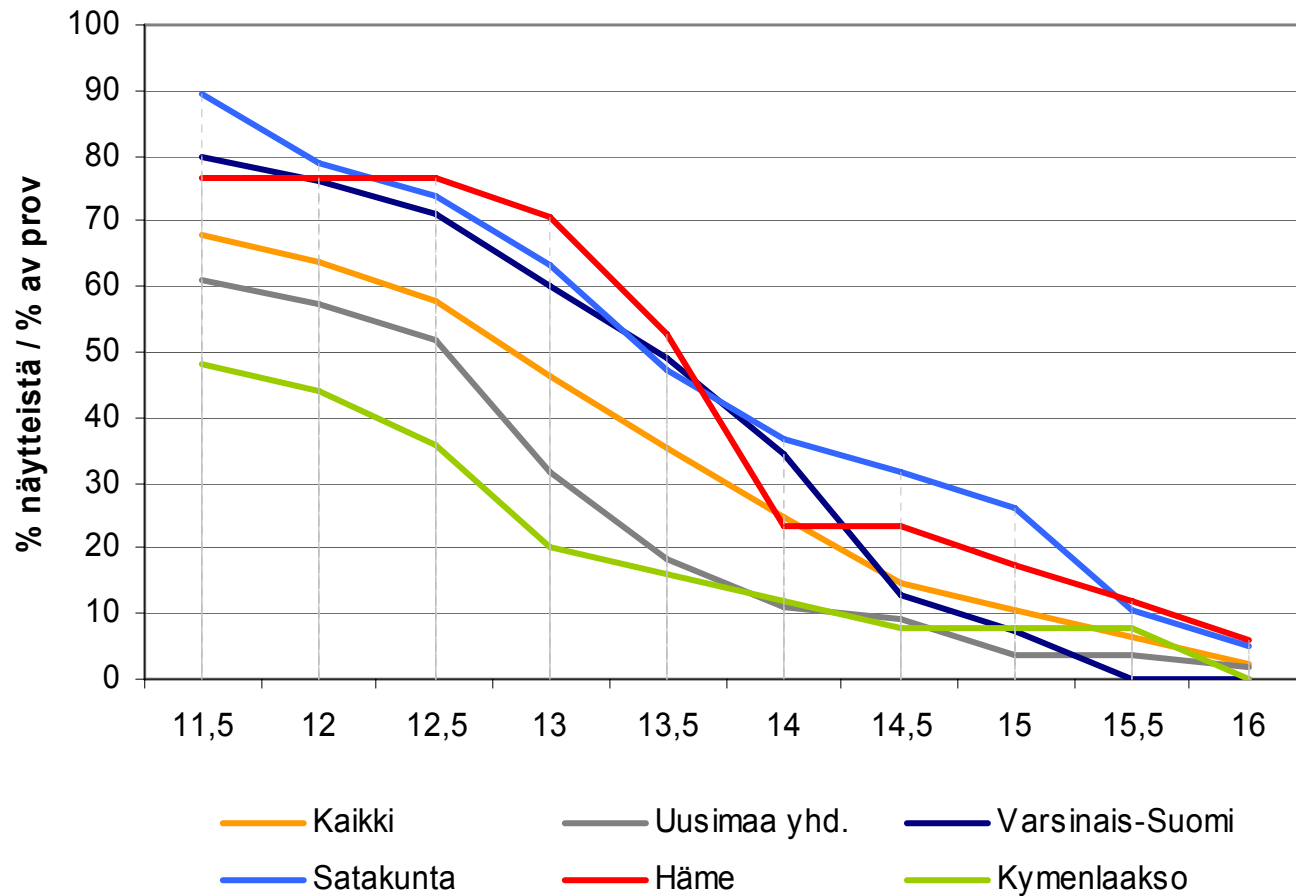


# KEVÄTVEHNÄN VALKUAINEN LUOKITTAIN 1998 - 2007

miljoonina kiloina

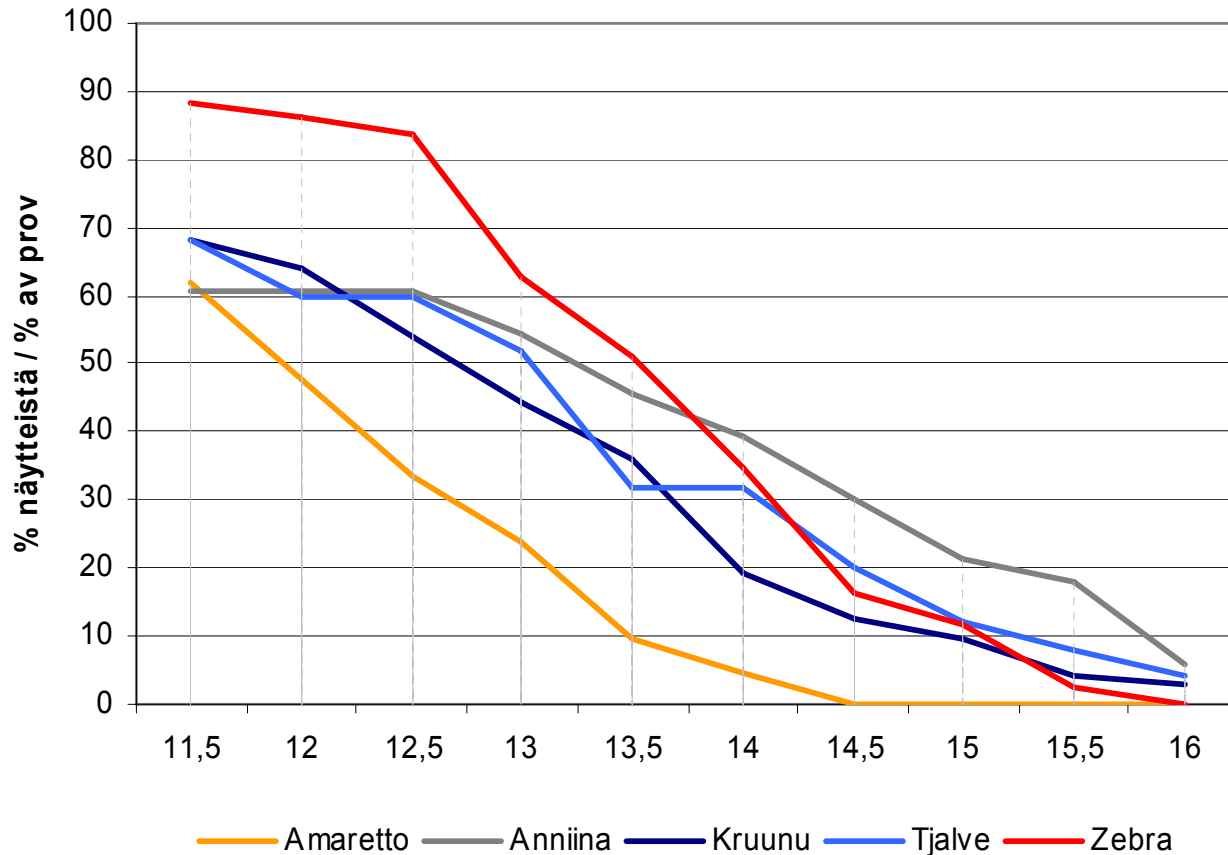


# Kevätvehnän myllykelpoisuus

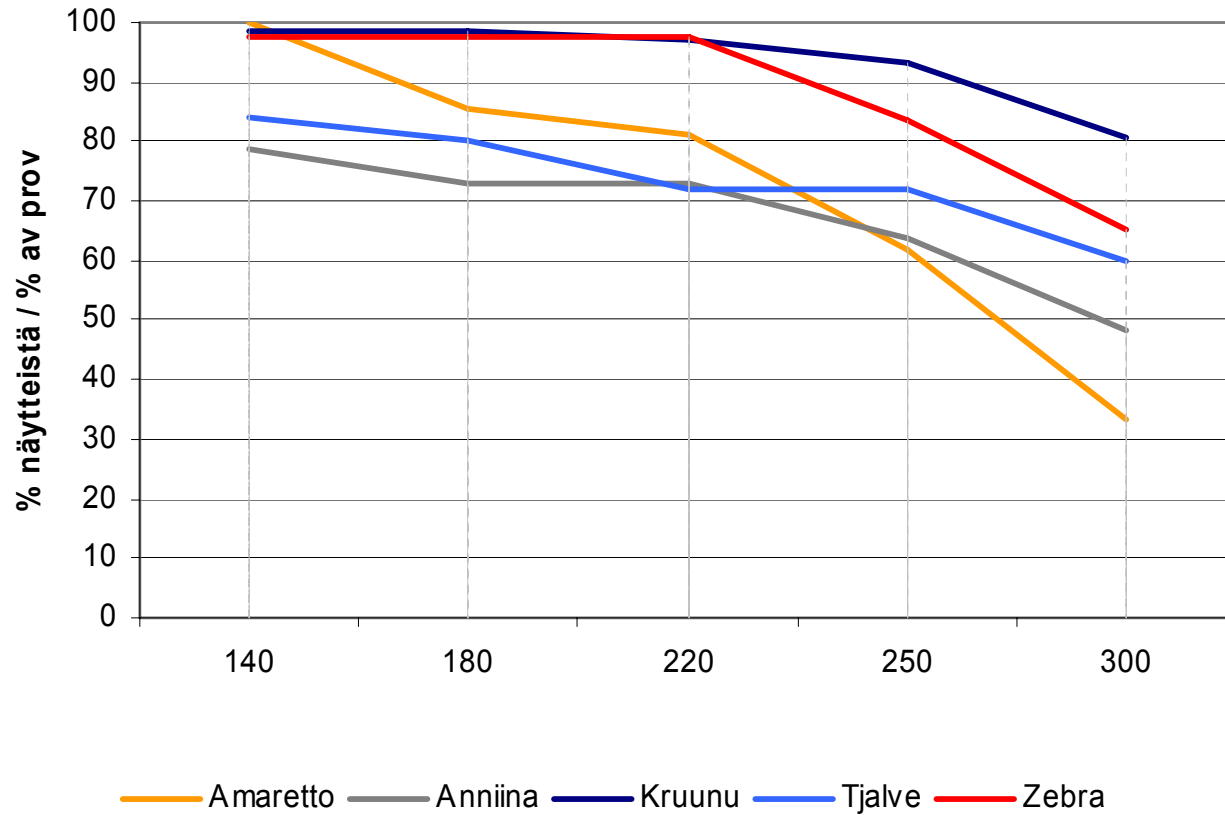




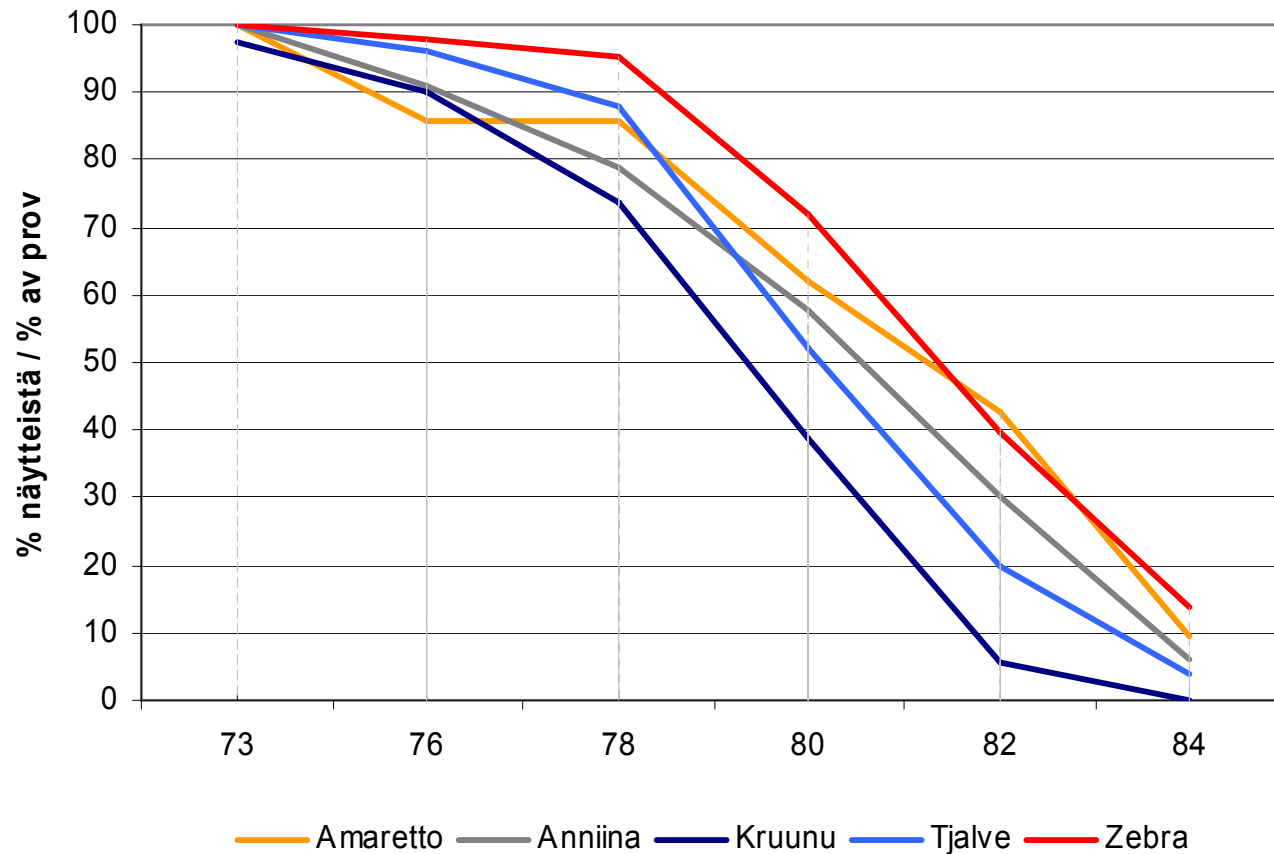
# Kevätvehnän myllykelpoisuus



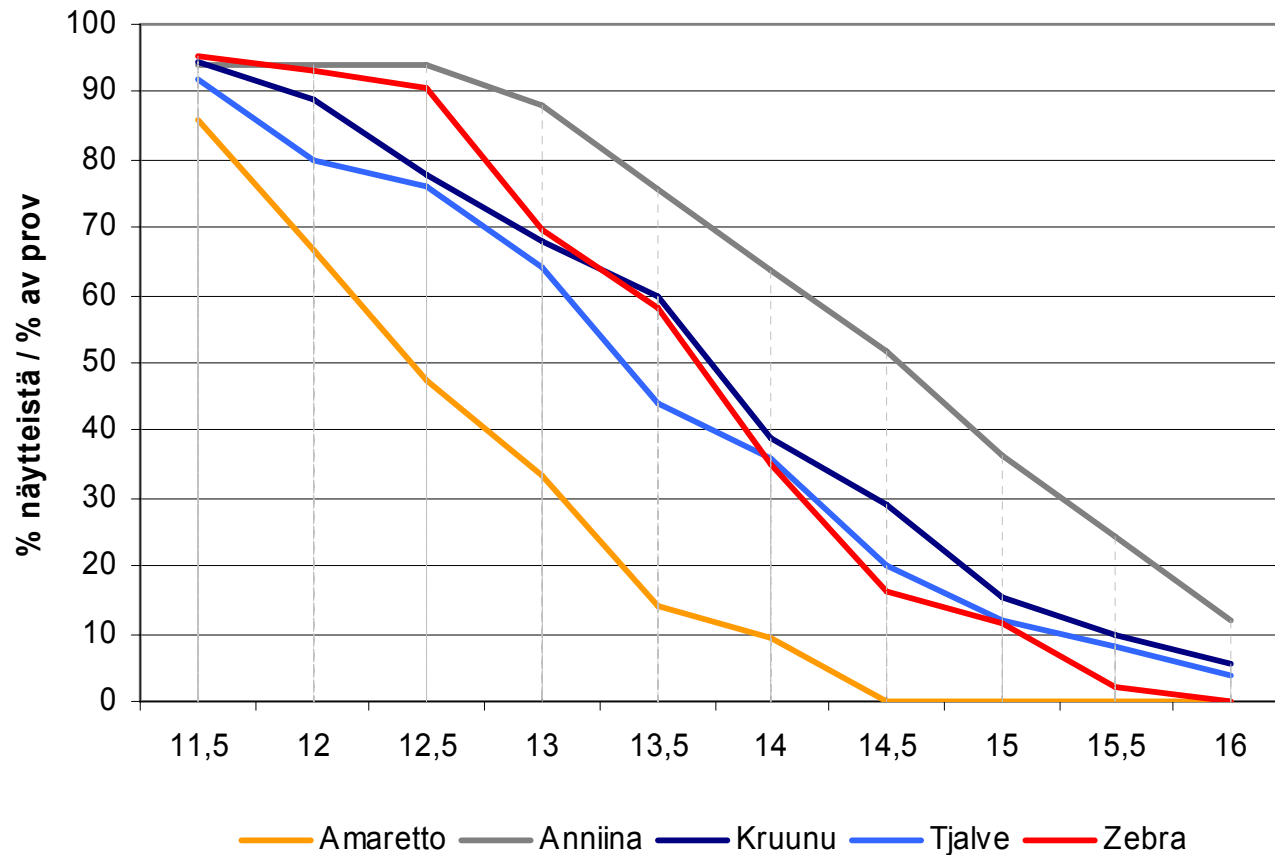
# Kevätvehnän sakoluku



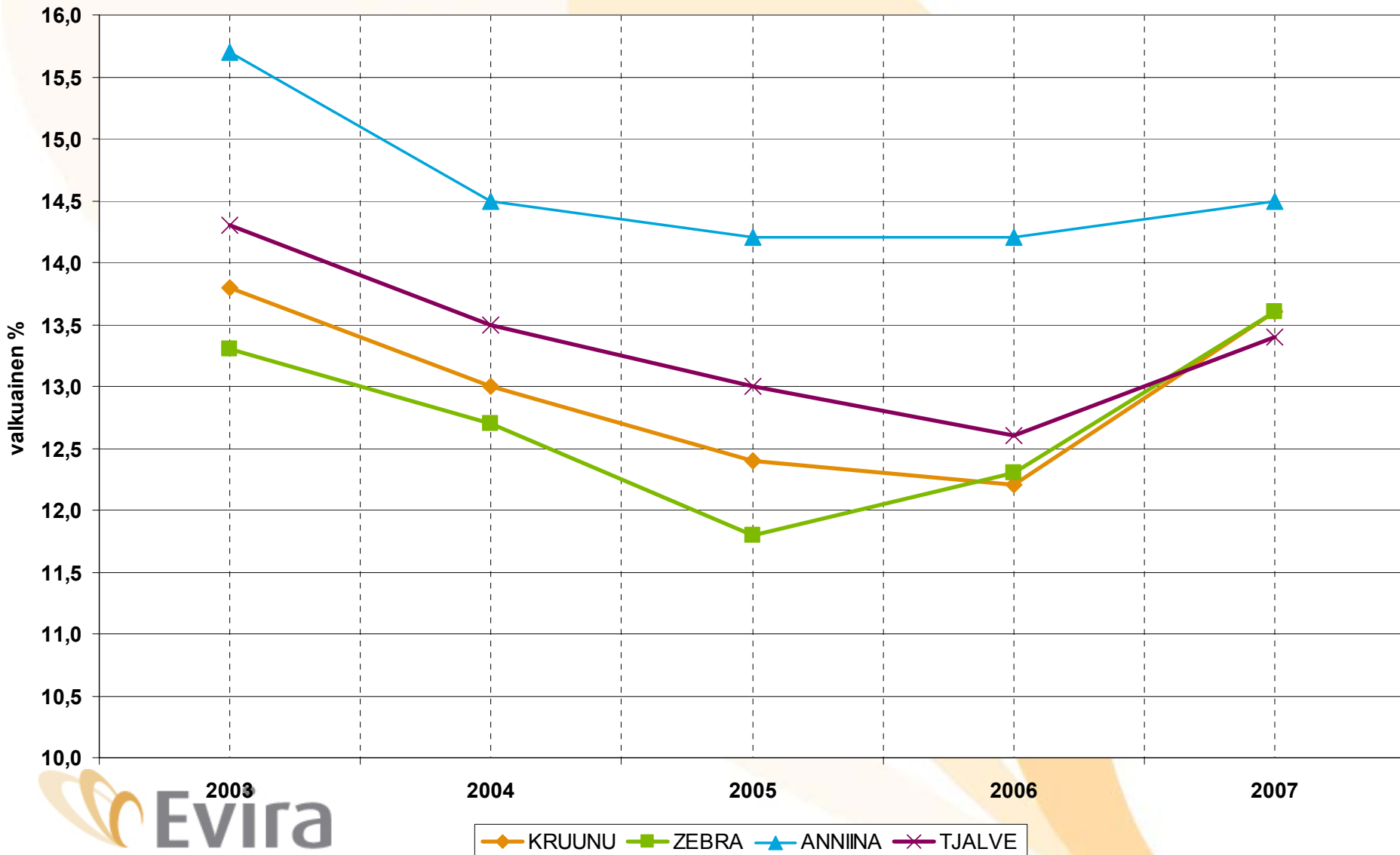
# Kevätvehnän hehtolitrapaino



# Kevätvehnän valkuainen



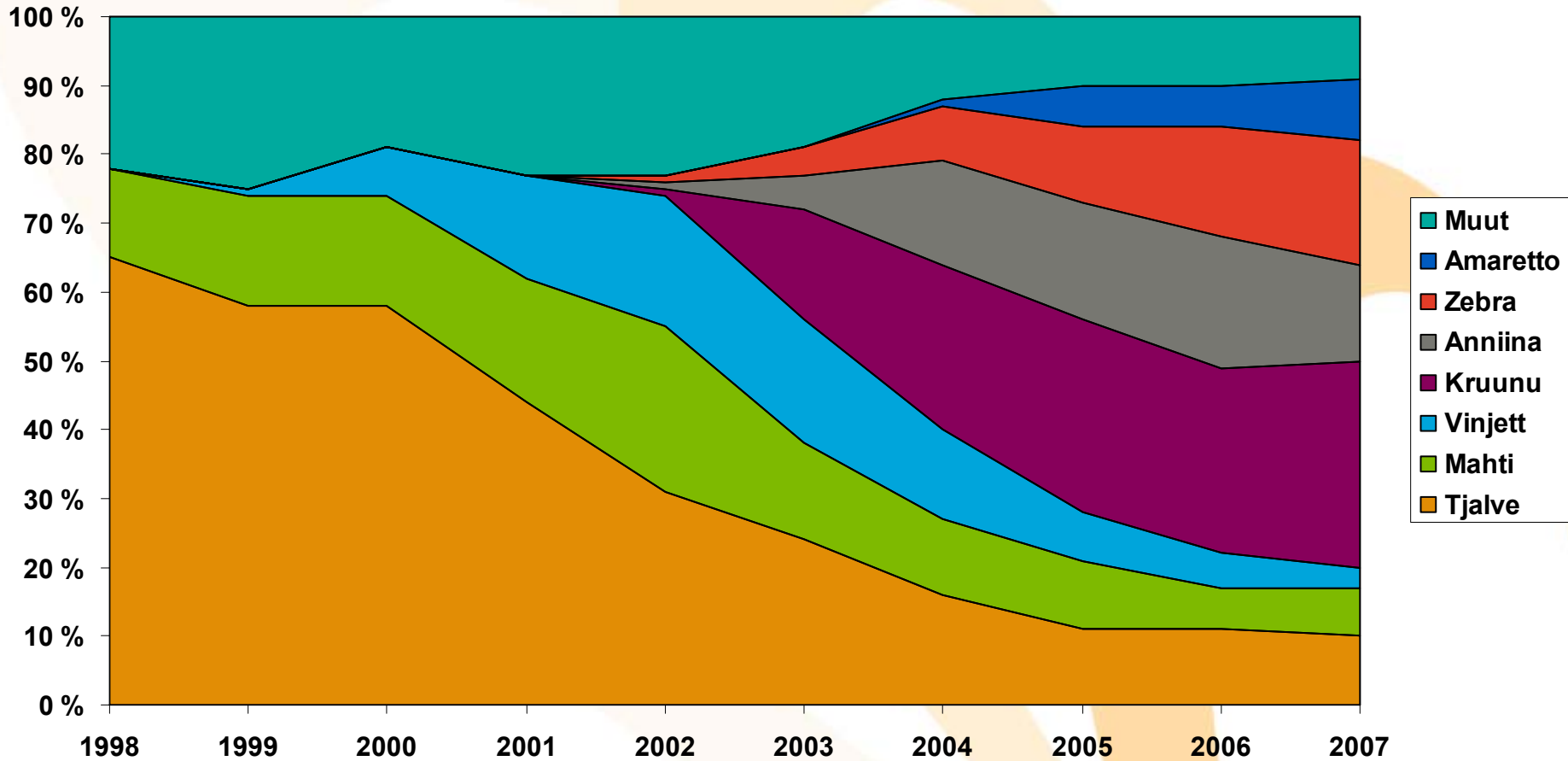
# KEVÄTVEHNÄN VALKUAINEN LAJIKKEITTAIN 2003 - 2007



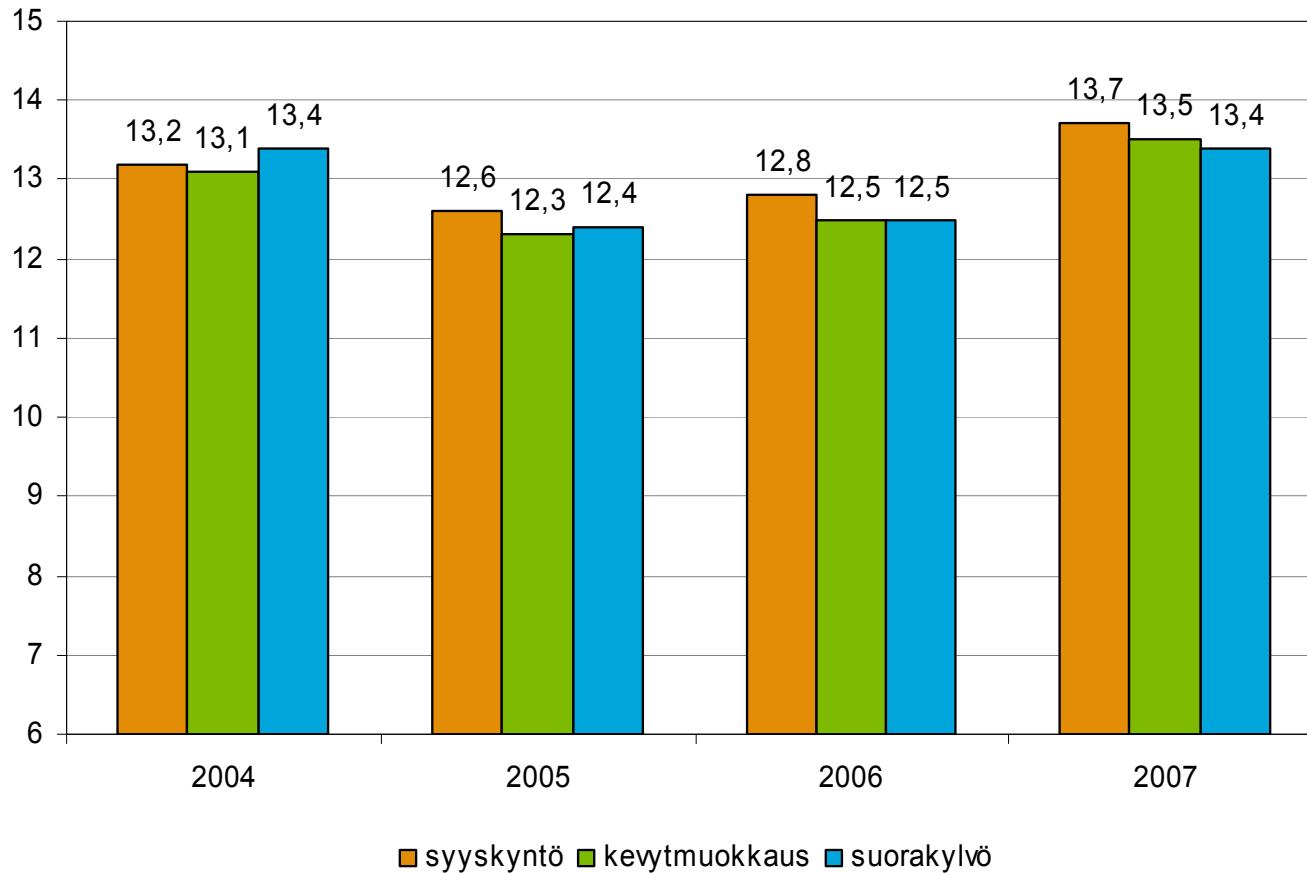
# Kevätvehnänäytteiden osuudet %

	Uusi- maa	Nylands svenska	Varsinais -Suomi	Sata- kunta	Häme	Kymen- laakso	Koko maa
<b>Amaretto</b>	6	25	7	16	6	8	9
<b>Anniina</b>	12	0	4	5	0	20	14
<b>Kruunu</b>	15	25	40	42	53	20	30
<b>Muut</b>	27	20	9	21	18	24	20
<b>Tjalve</b>	6	5	13	16	6	28	10
<b>Zebra</b>	35	25	27	0	18	0	18

# KEVÄTVEHNÄLAJIKKEIDEN YLEISYYS NÄYTTEISTÄ % 1998 - 2007

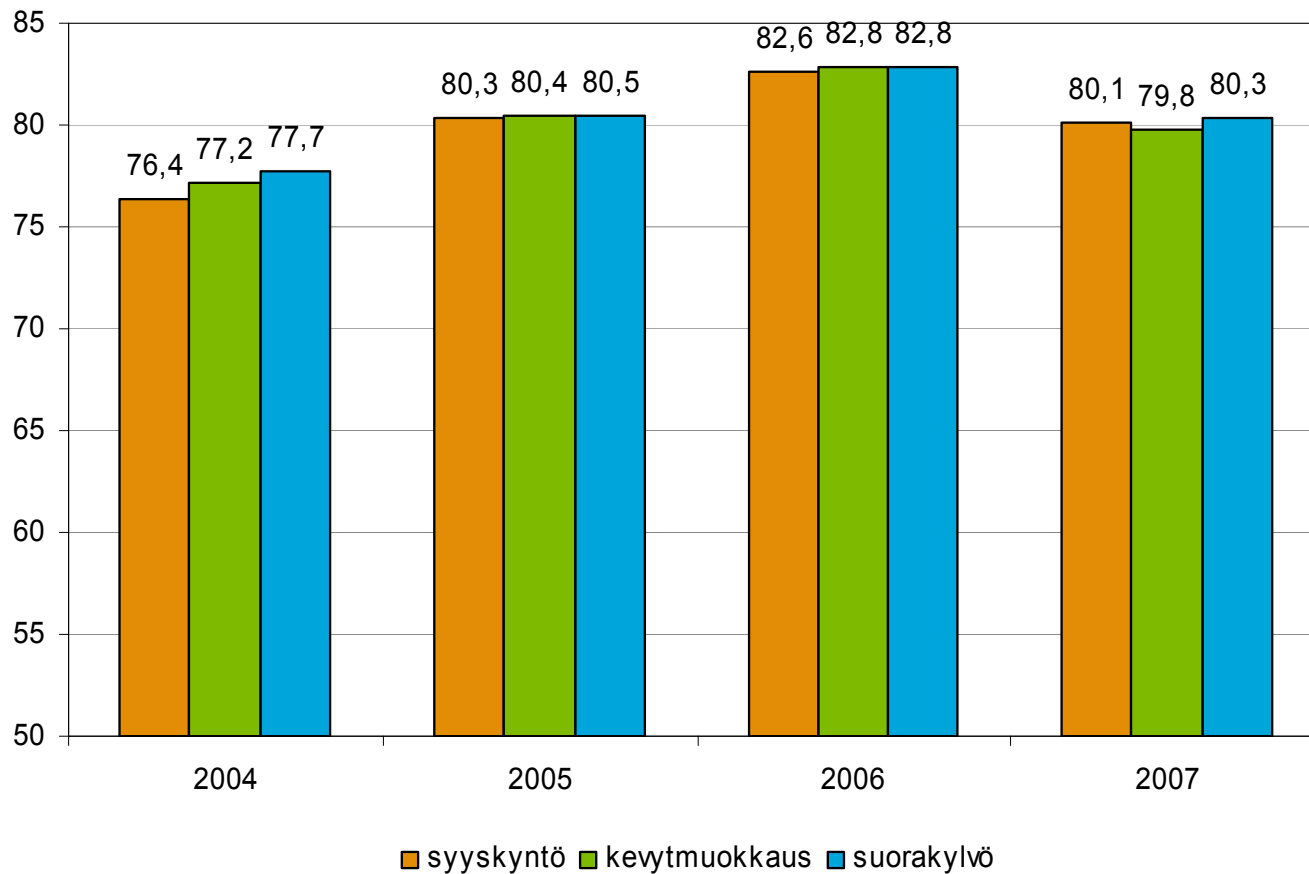


# Kevätvehnä valkuainen

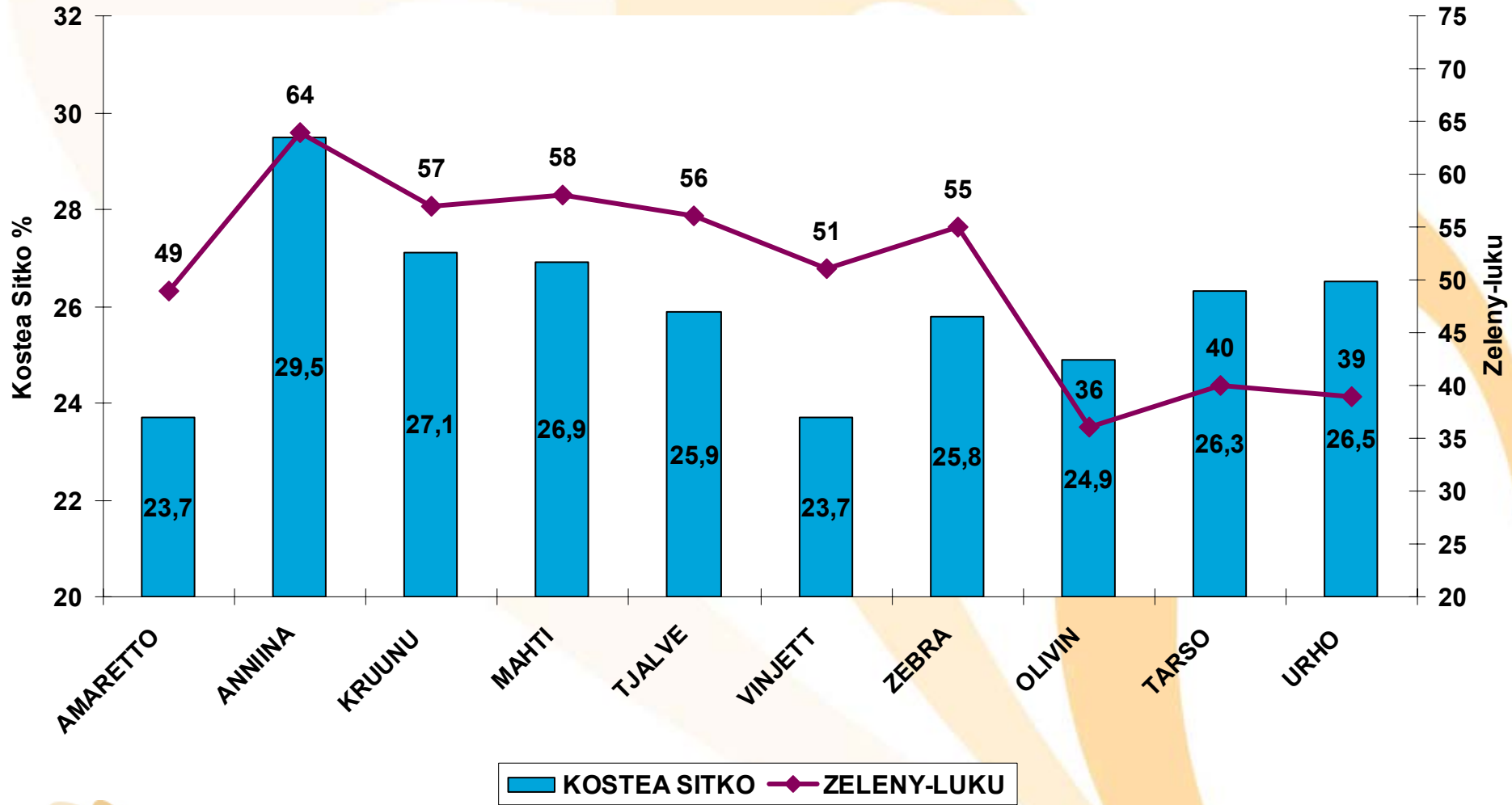




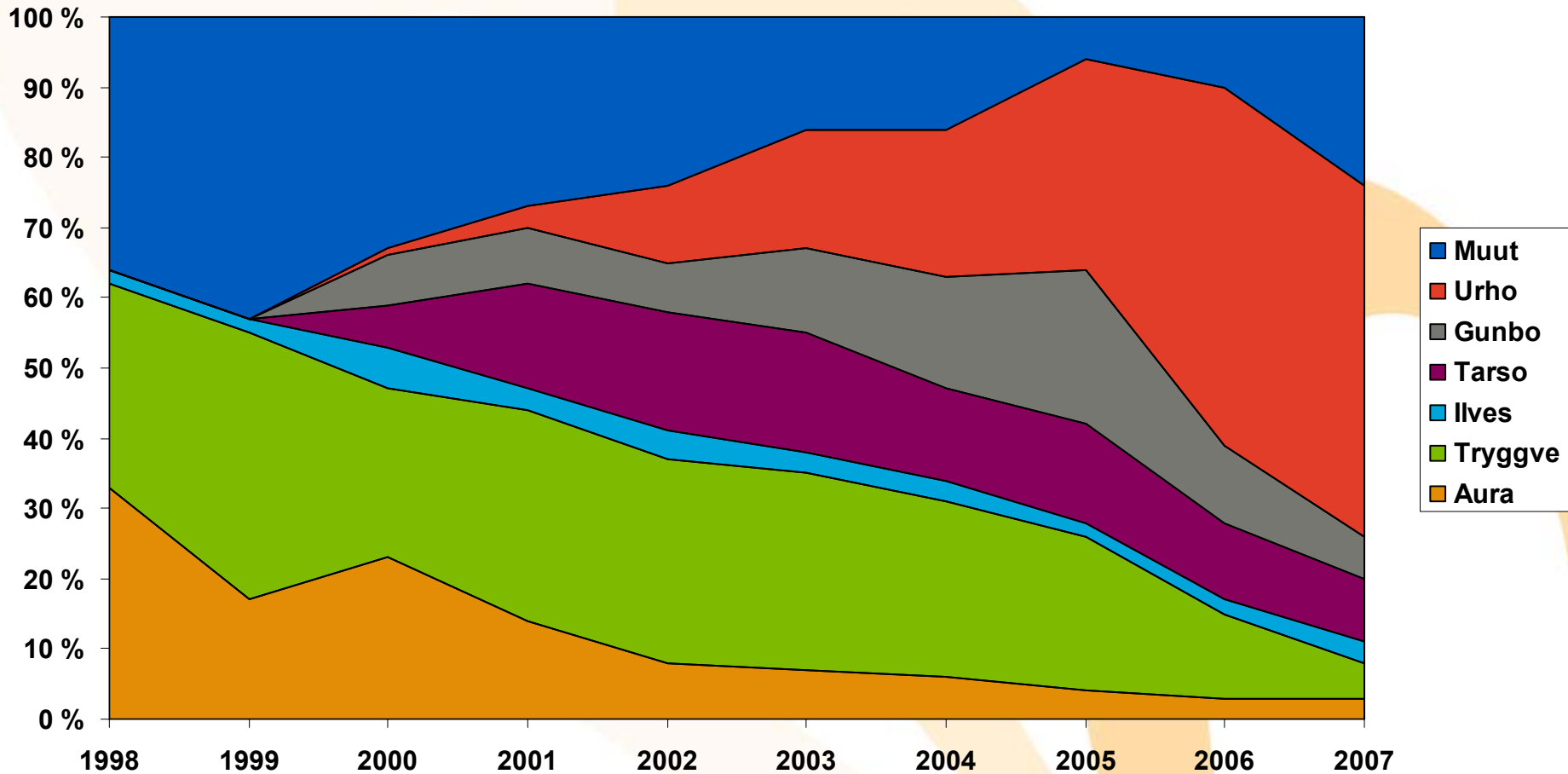
# Kevätvehnä hehtolitrapaino



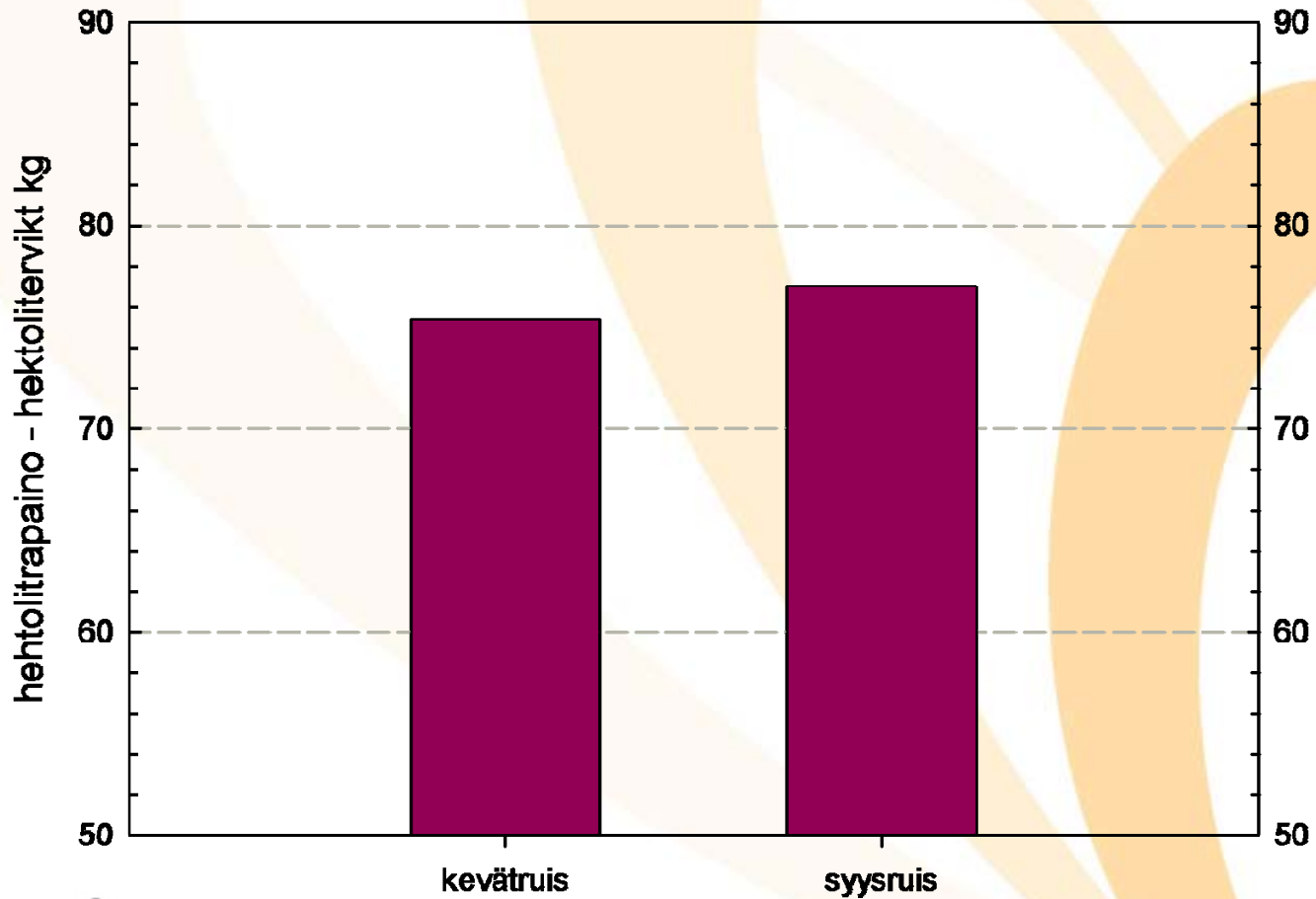
# VEHNÄN SITKOPITOISUUS JA ZELENY-LUKU LAJIKKEITTAIN 2007



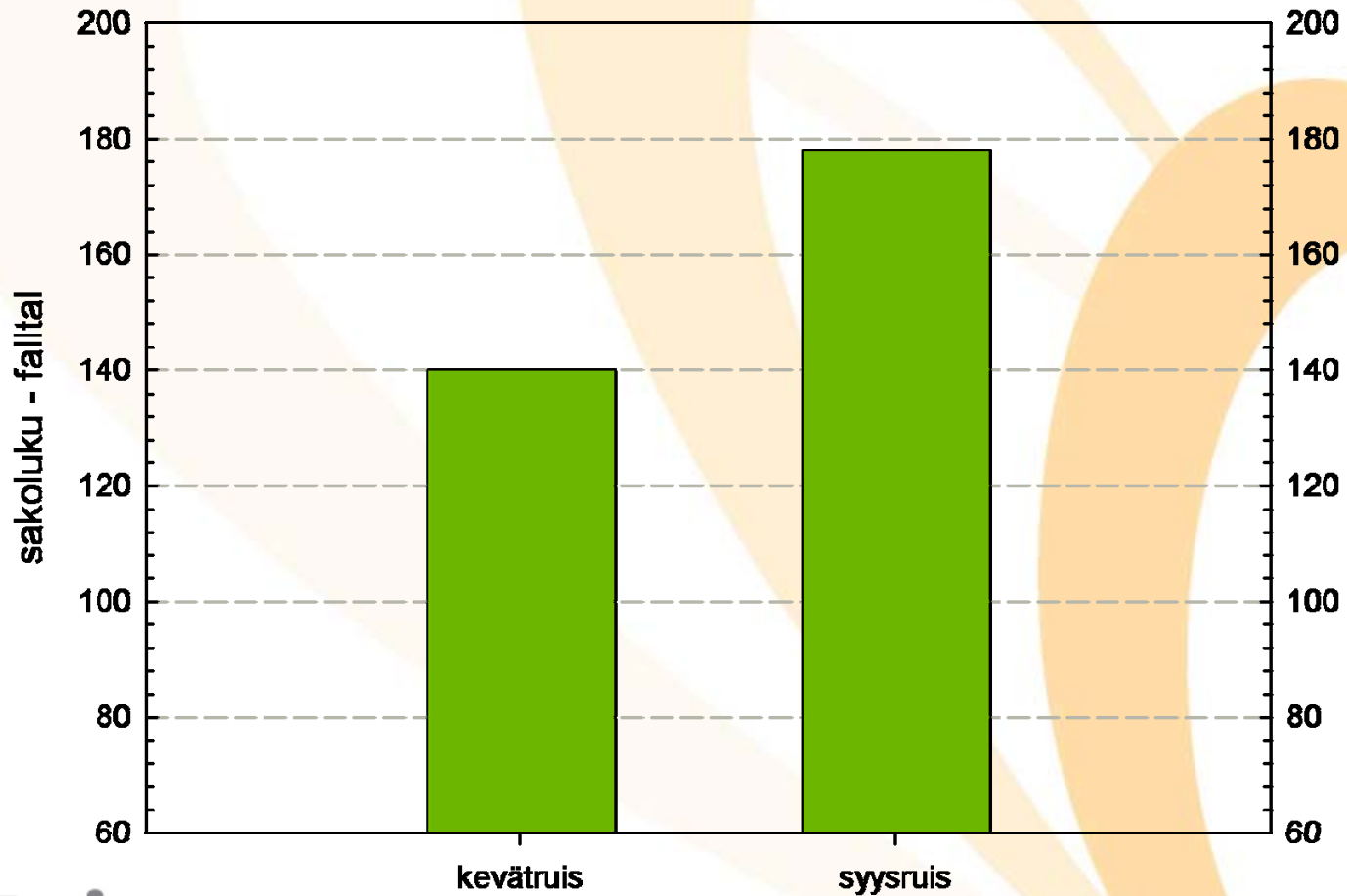
# SYYSVEHNÄLAJIKKEIDEN YLEISYYS NÄYTTEISTÄ % 1998 - 2007



# Rukiin hehtolitrainpaineo

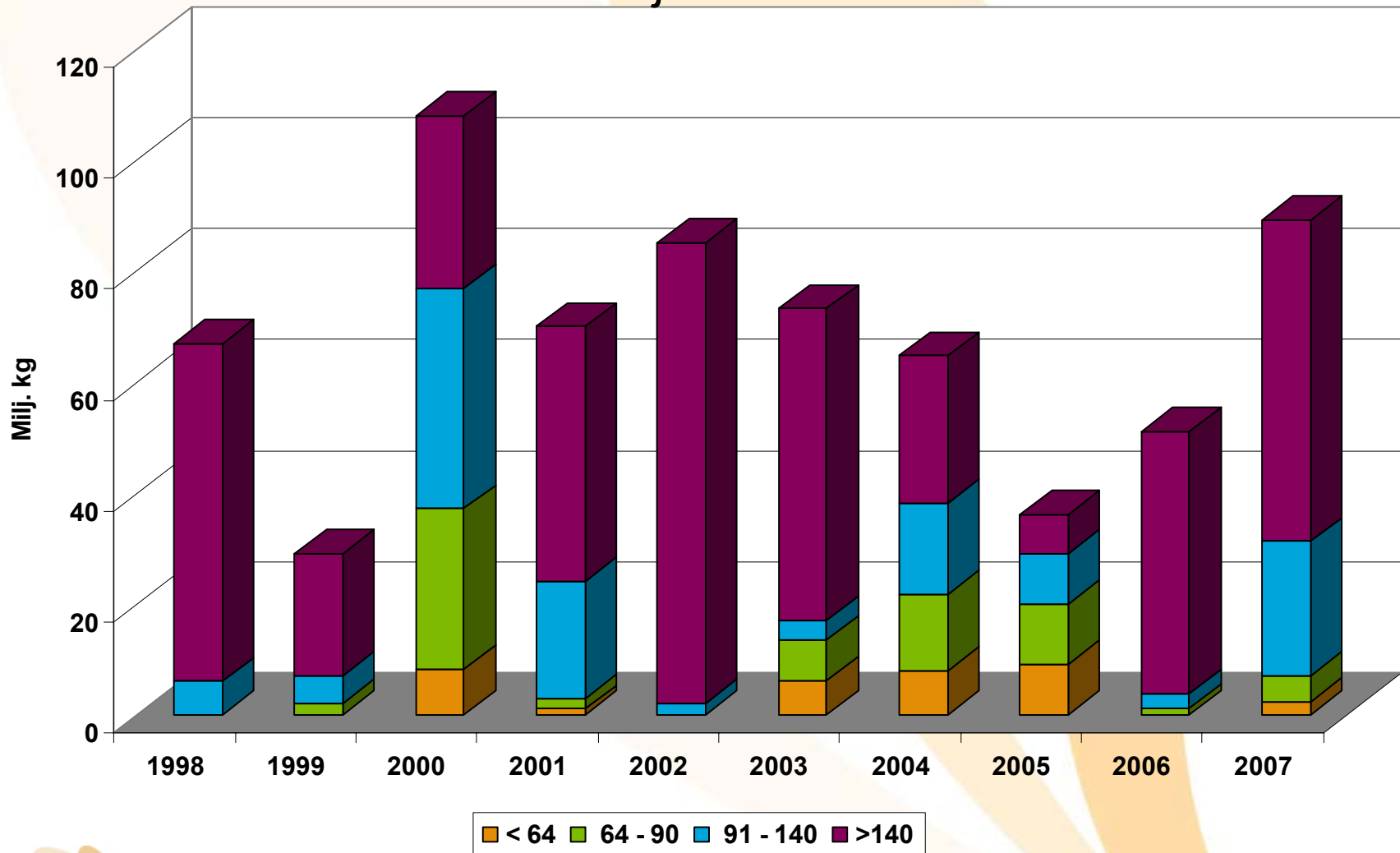


# Rukiin sakoluku



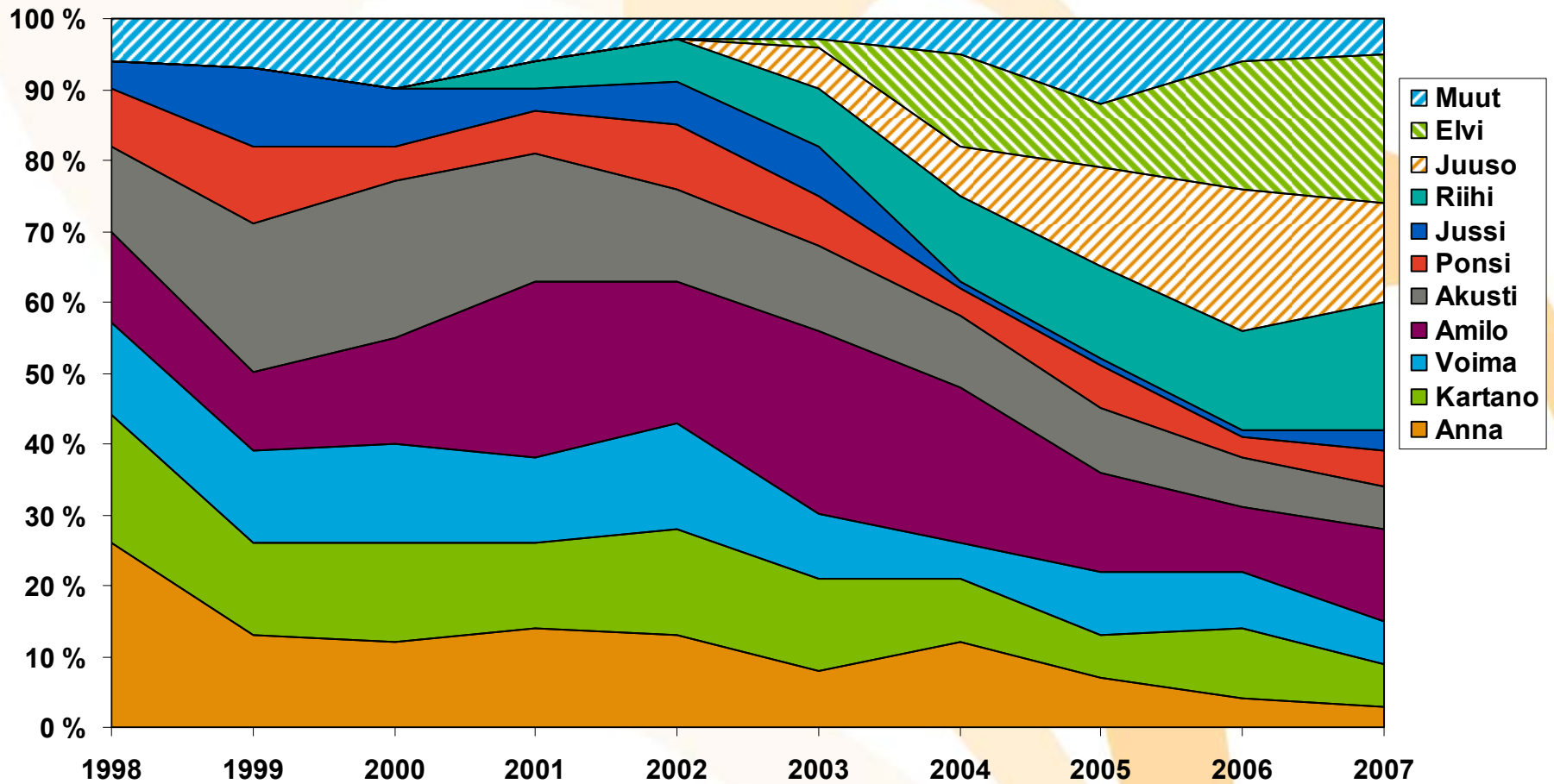
# RUKIIN SAKOLUKU LUOKITTAIN 1998 - 2007

miljoonina kiloina



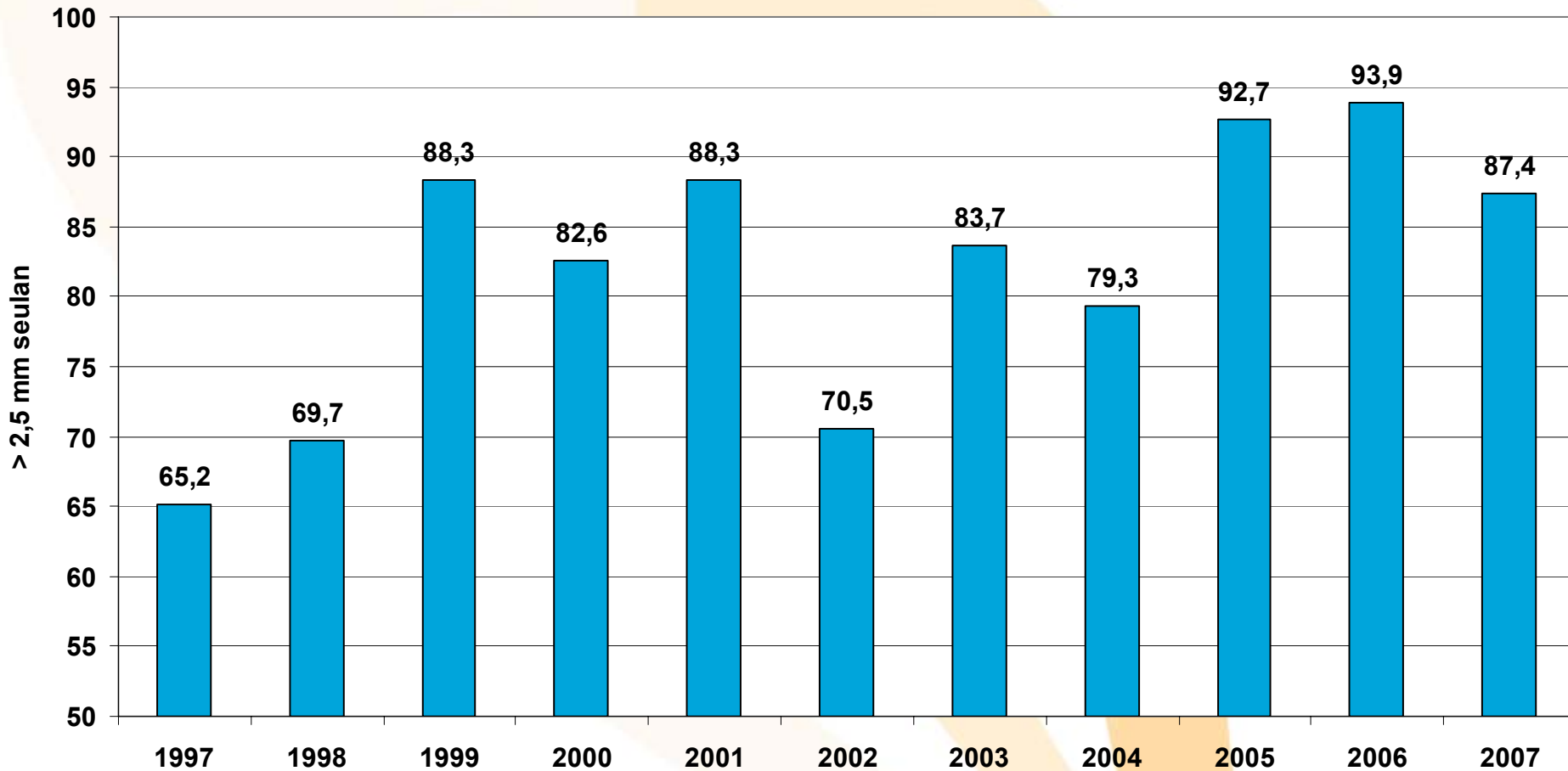
# RUISLAJIKKEIDEN YLEISYYS NÄYTTEISTÄ %

## 1998 - 2007



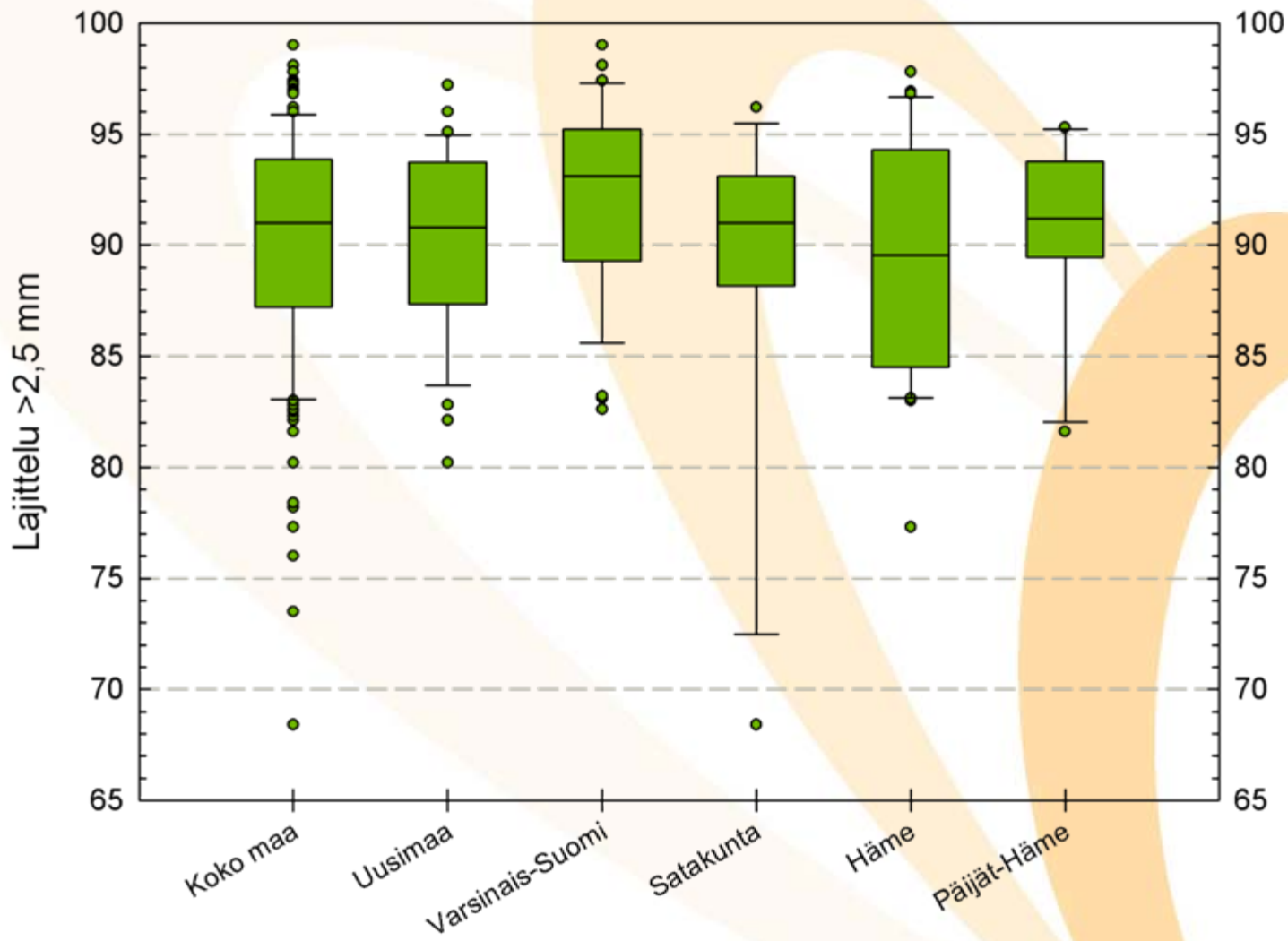
# MALLASOHRAN LAJITTELU

## 1998 - 2007

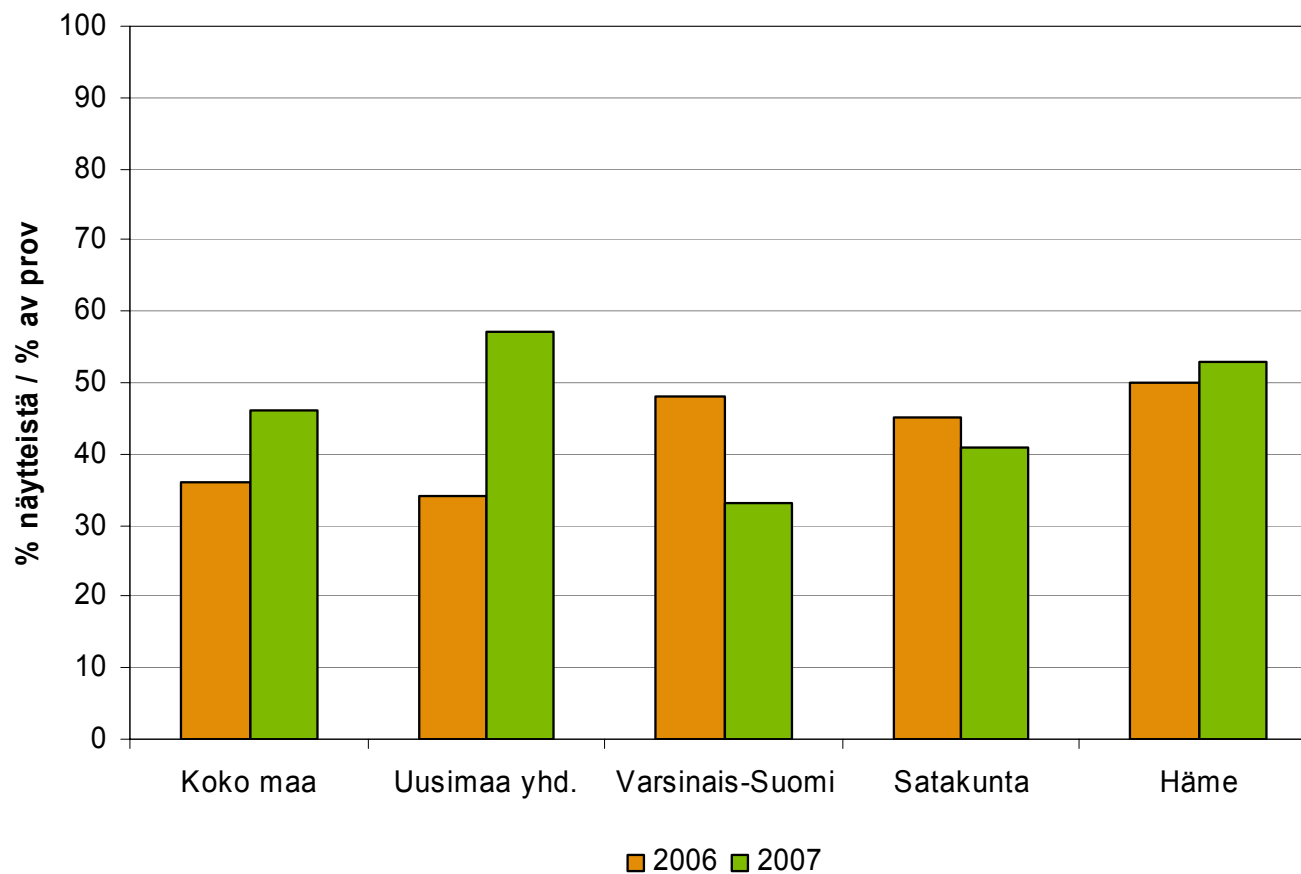




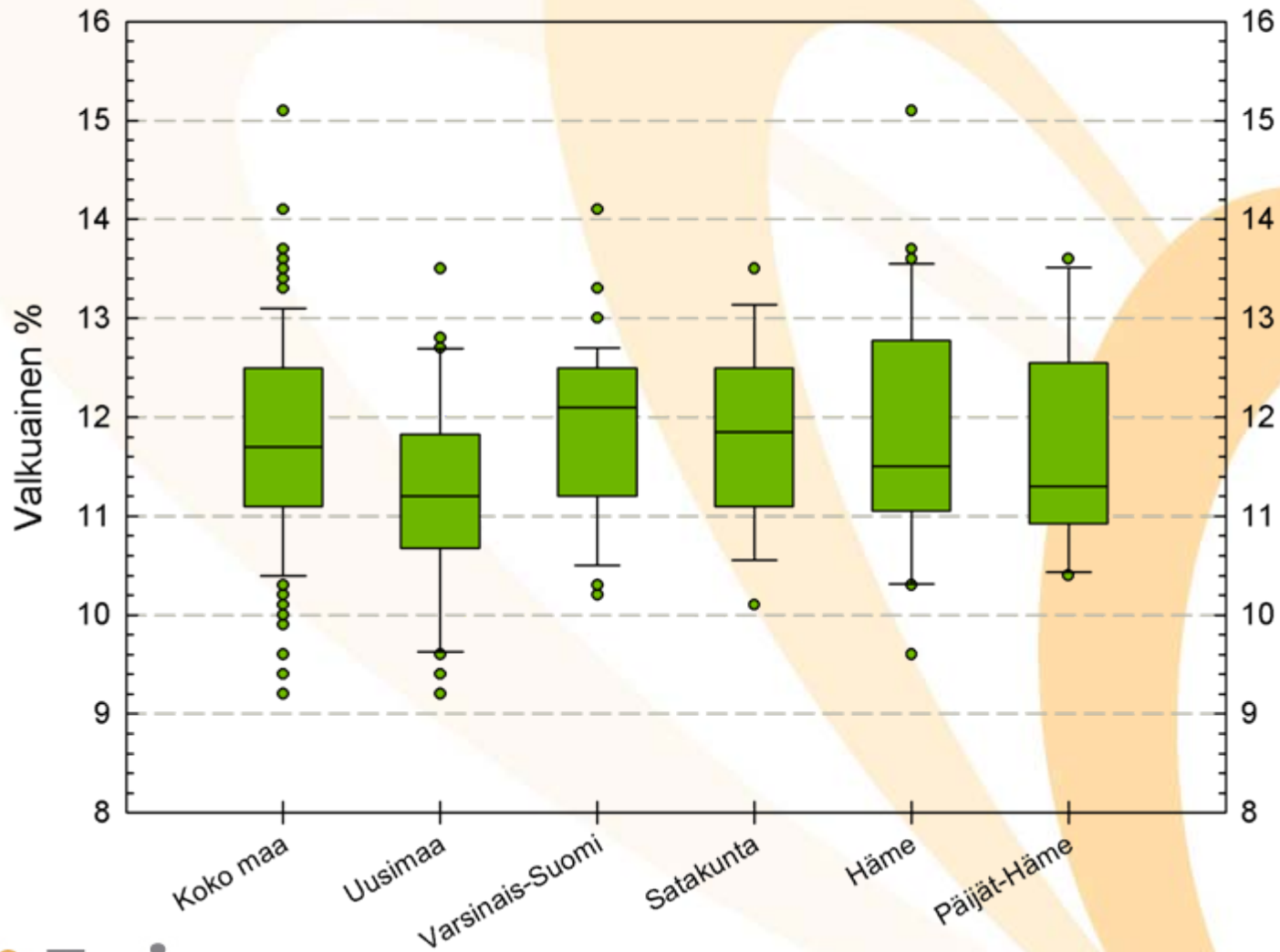
# Mallasohran lajittelu maaseutukeskuksittain 22007



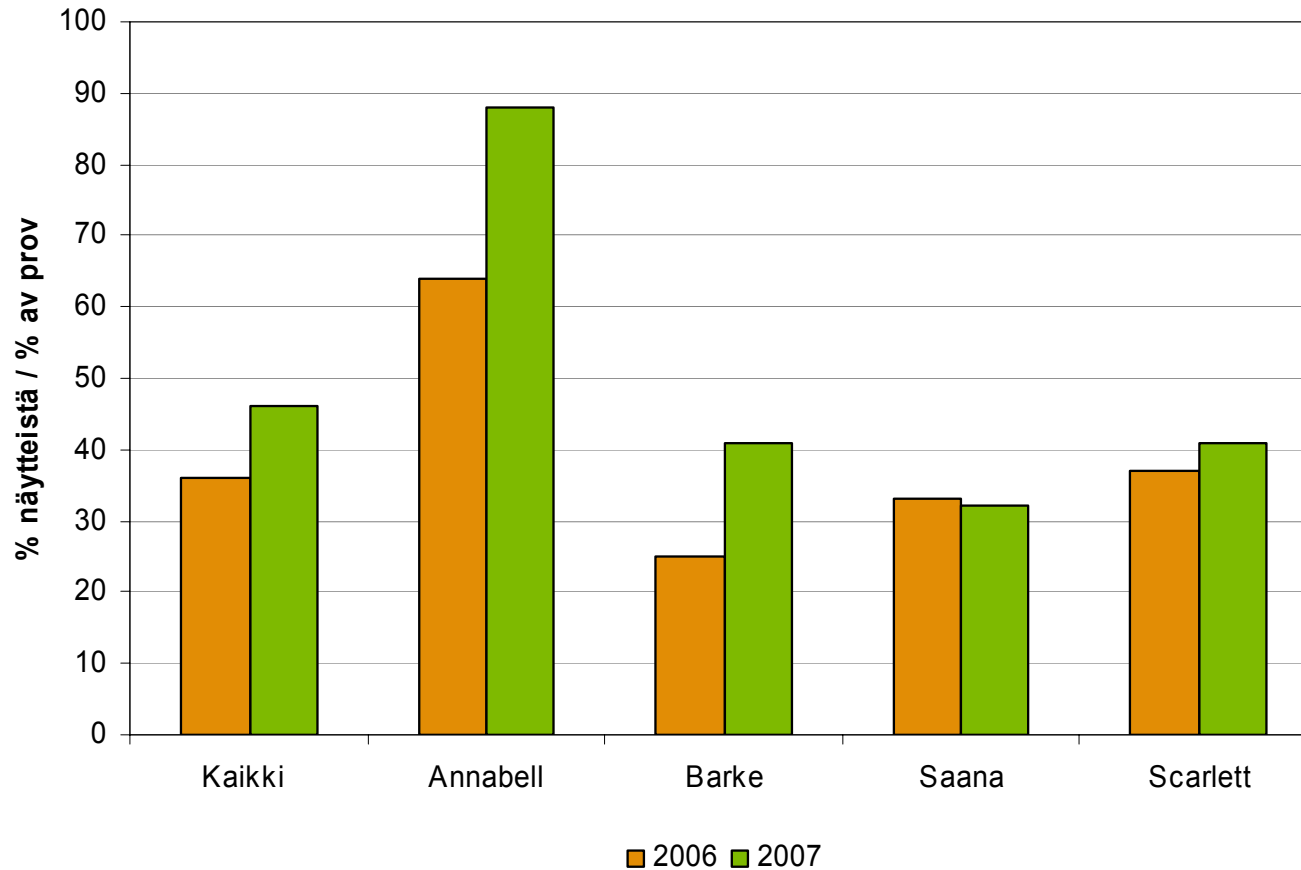
# Mallasohra valkuainen $\leq 11,5$ %



# Mallasohran valkuainen maaseutukeskuksittain 2007



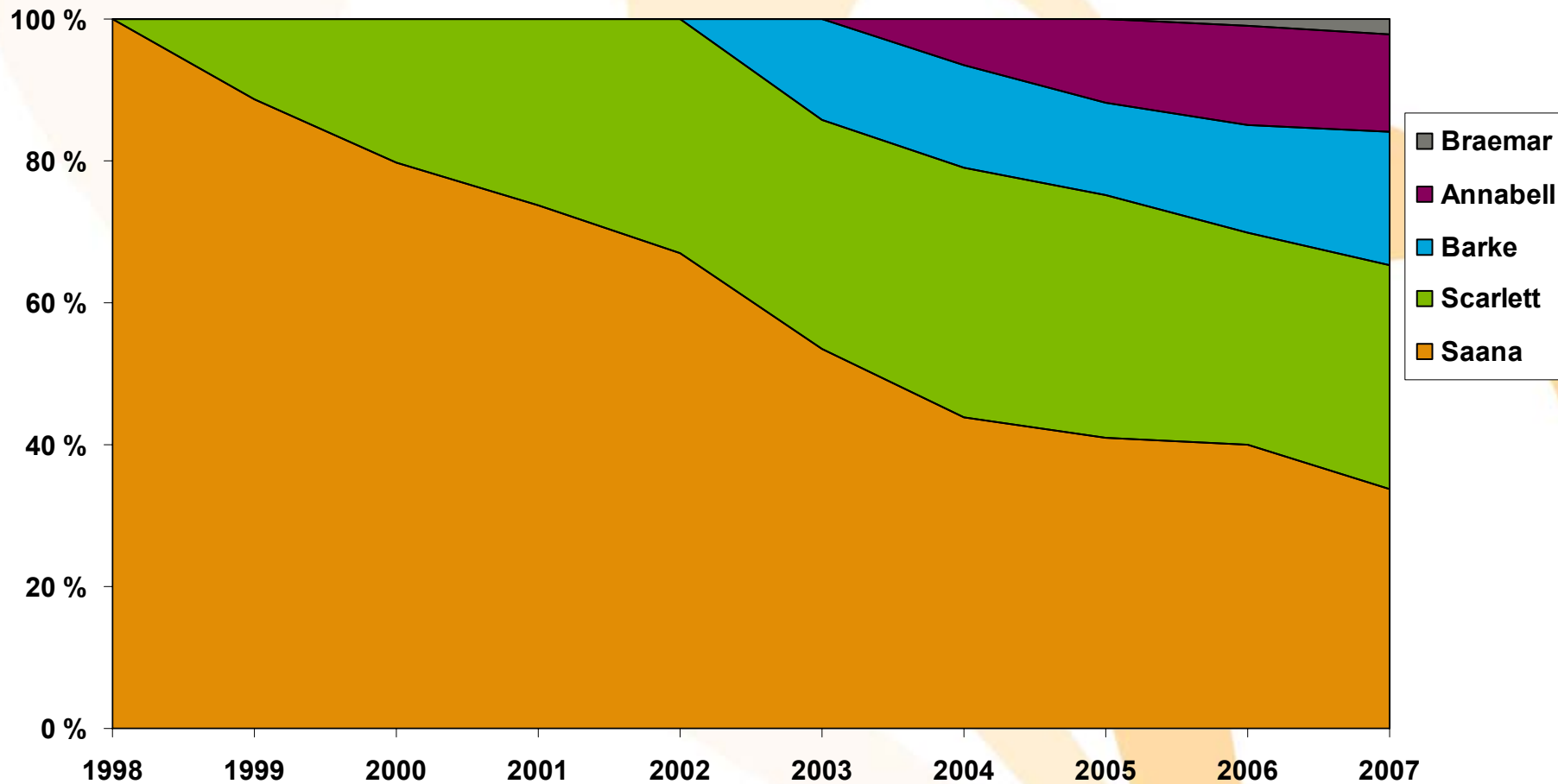
# Mallasohra valkuainen $\leq 11,5$ %



# Mallasohranäytteiden osuudet %

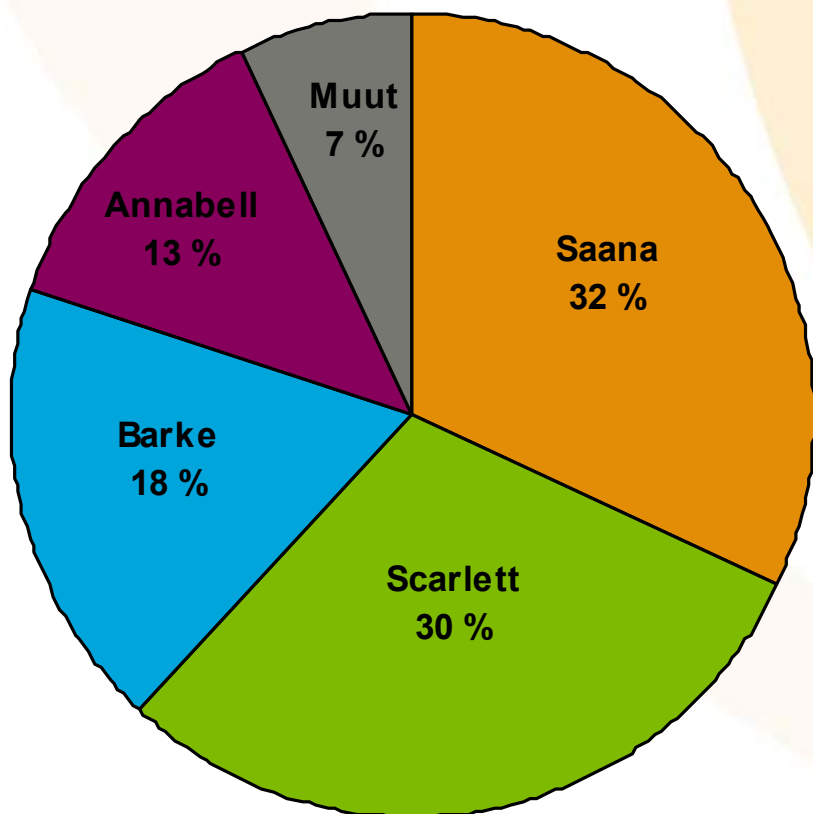
	<b>Uusimaa yhd.</b>	<b>Varsinais- Suomi</b>	<b>Satakunta</b>	<b>Häme</b>	<b>Koko maa</b>
<b>Annabell</b>	14	8	18	17	11
<b>Barke</b>	46	18	23	20	30
<b>Muut</b>	0	15	0	7	9
<b>Saana</b>	14	15	18	13	12
<b>Scarlett</b>	26	44	41	43	38

# MALLASOHRALAJIKKEIDEN YLEISYYS NÄYTTEISTÄ % 1998 - 2007

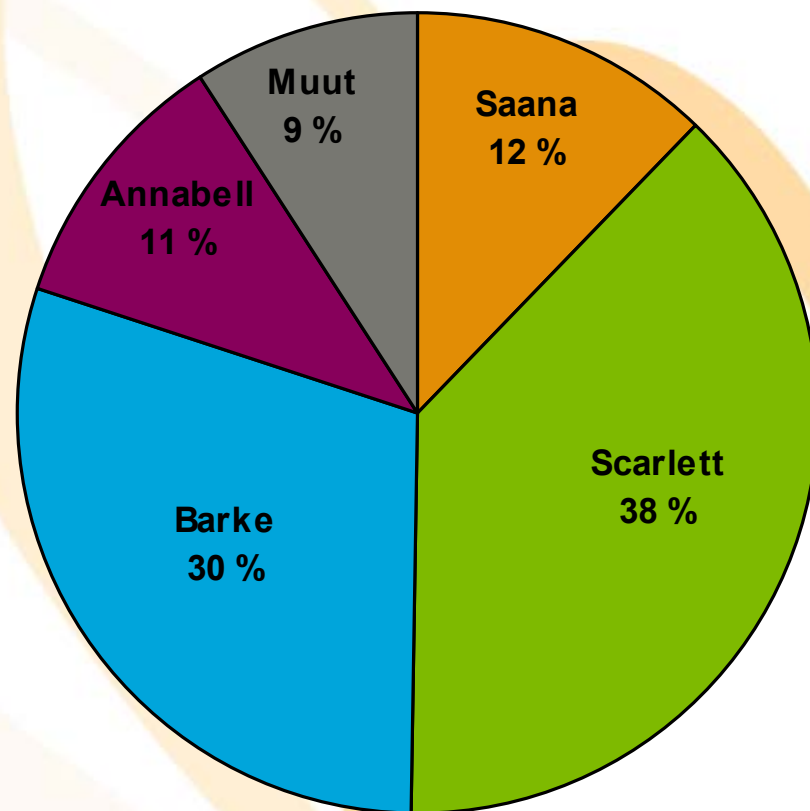


# MALLASOHRALAJIKKEIDEN YLEISYYS 2007

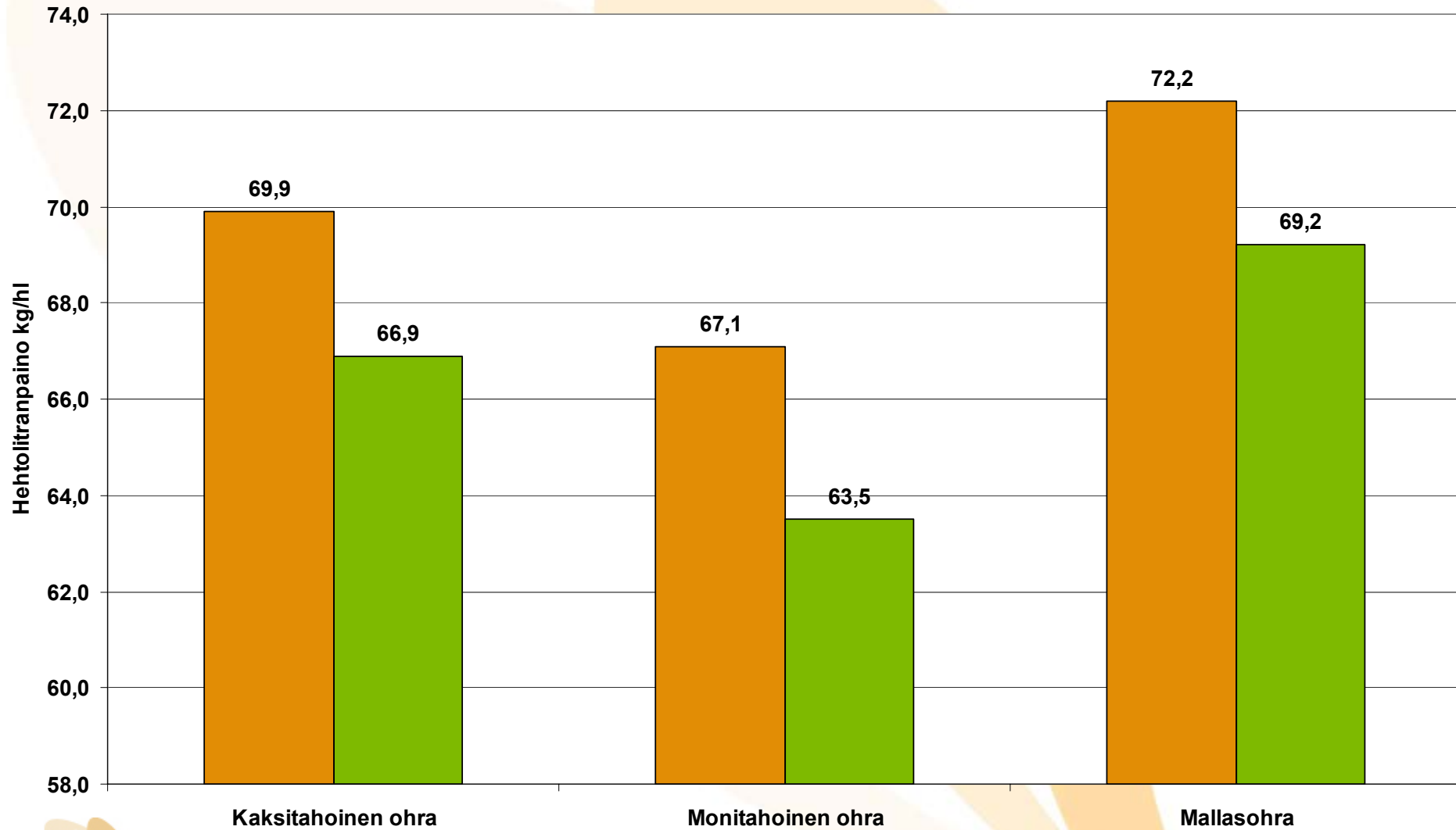
KAIKKI LAJIKKEET



MALLASTUKSEEN TARKOITETTU

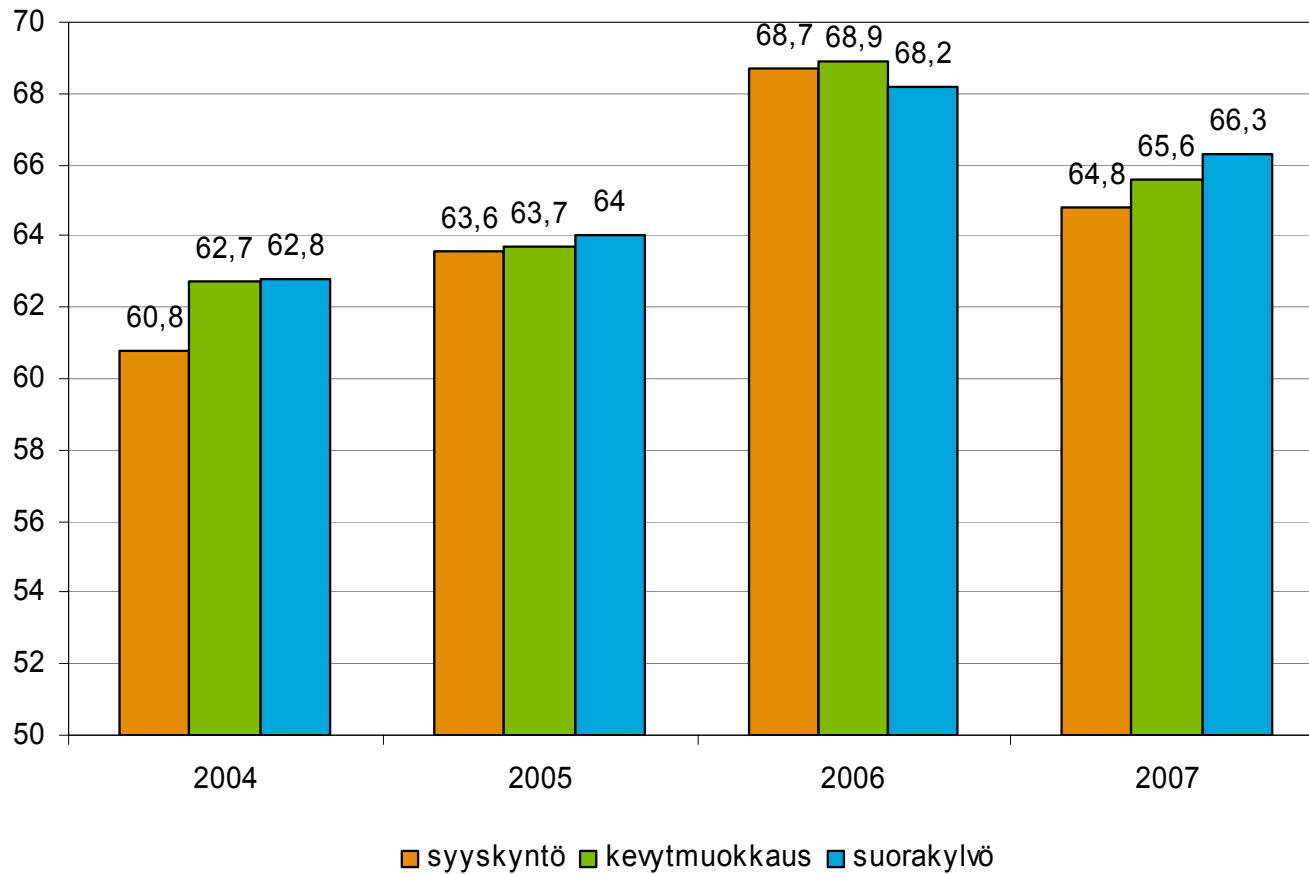


# OHRAN HEHTOLITRANPAINO (kg/hl)

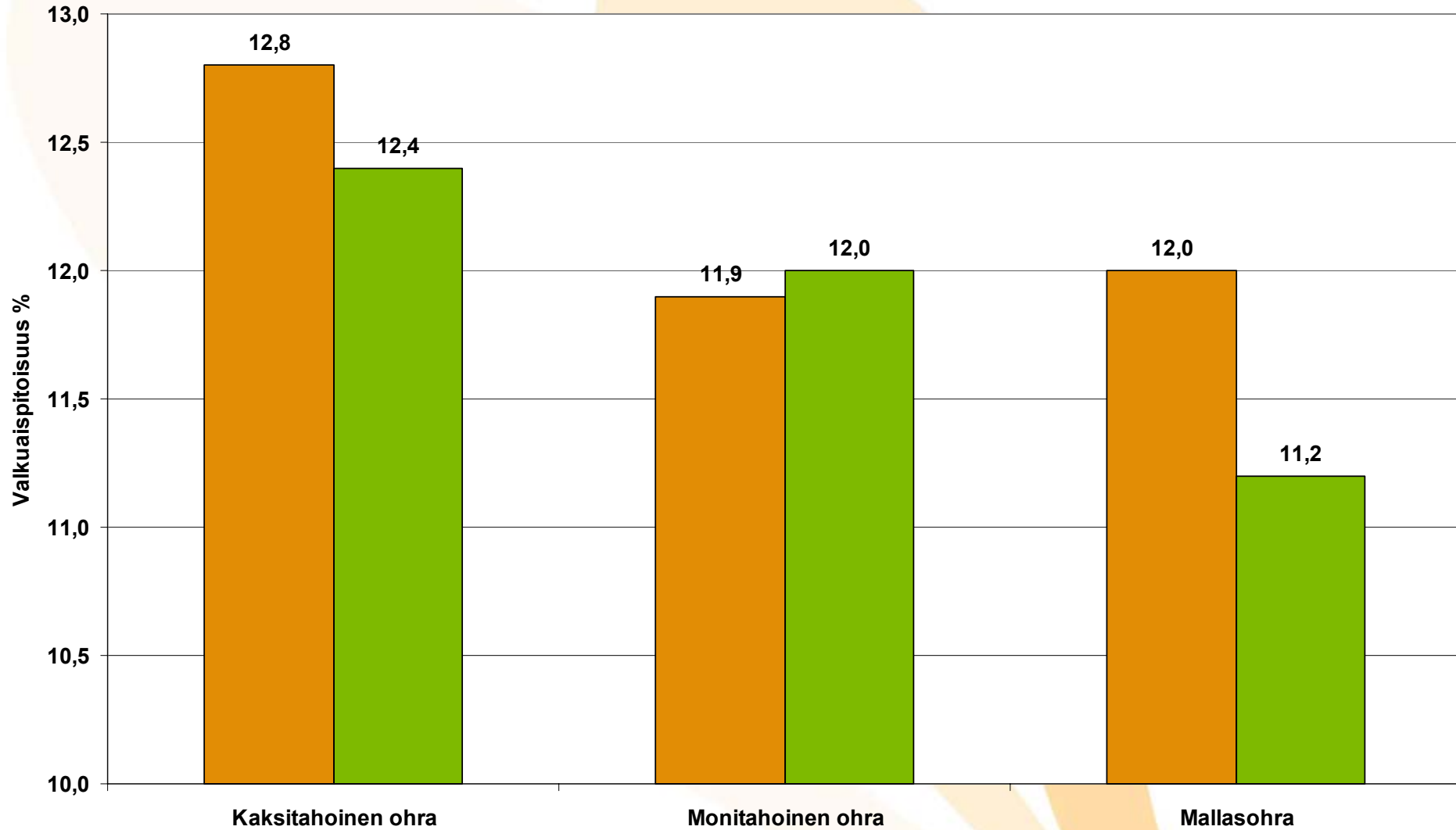




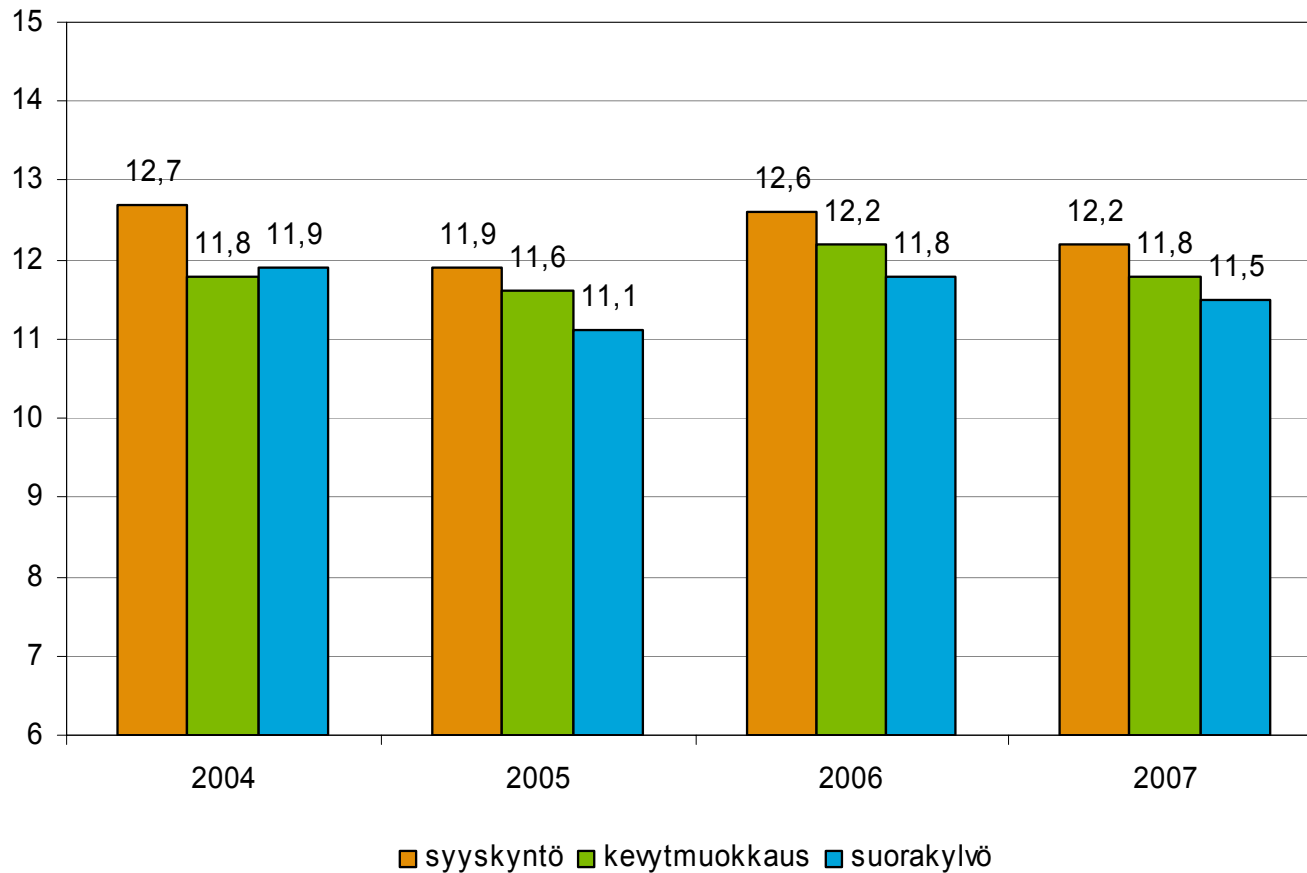
# Ohran hehtolitrapaino



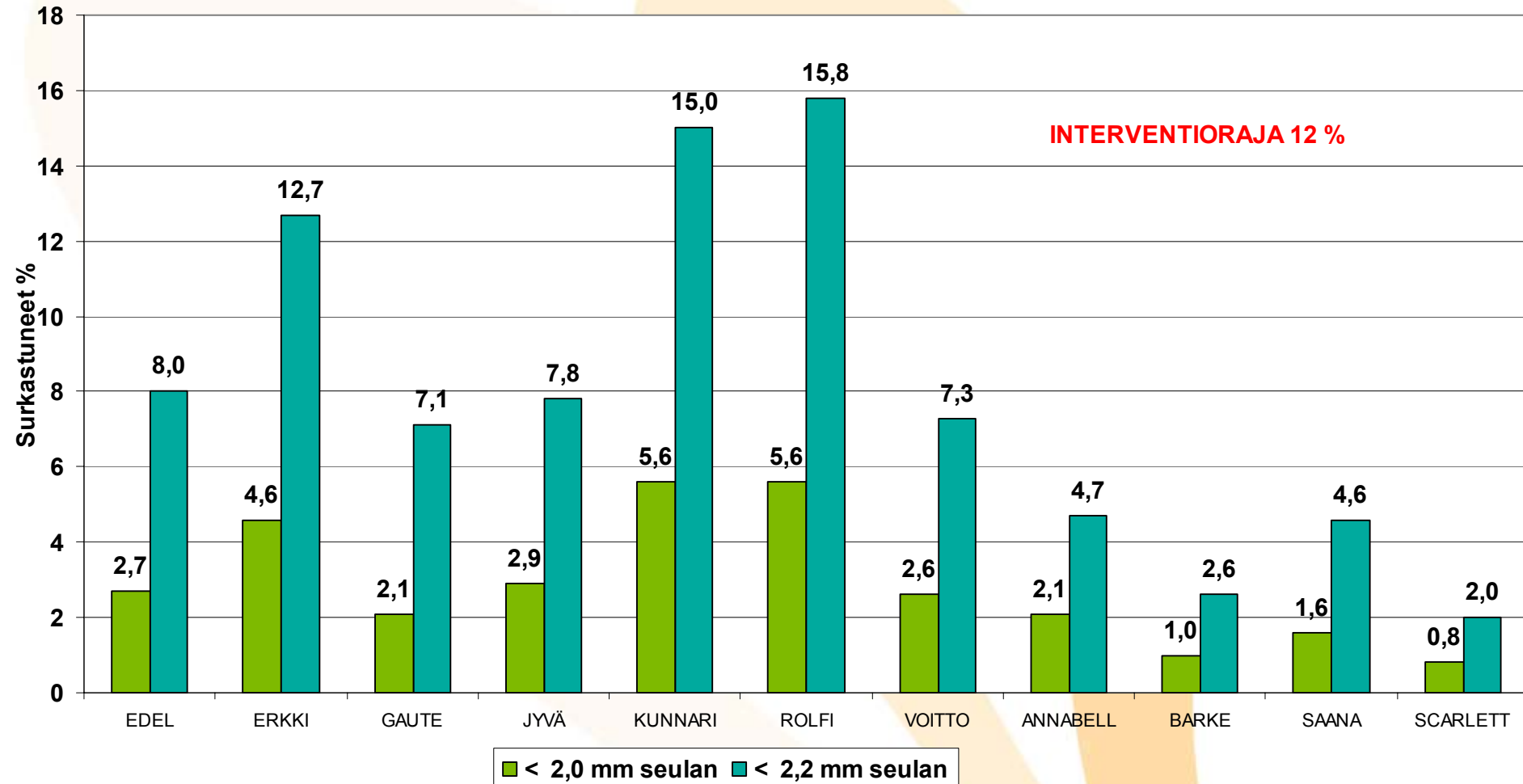
# OHRAN VALKUAINEEN (%)



# Ohran valkuainen

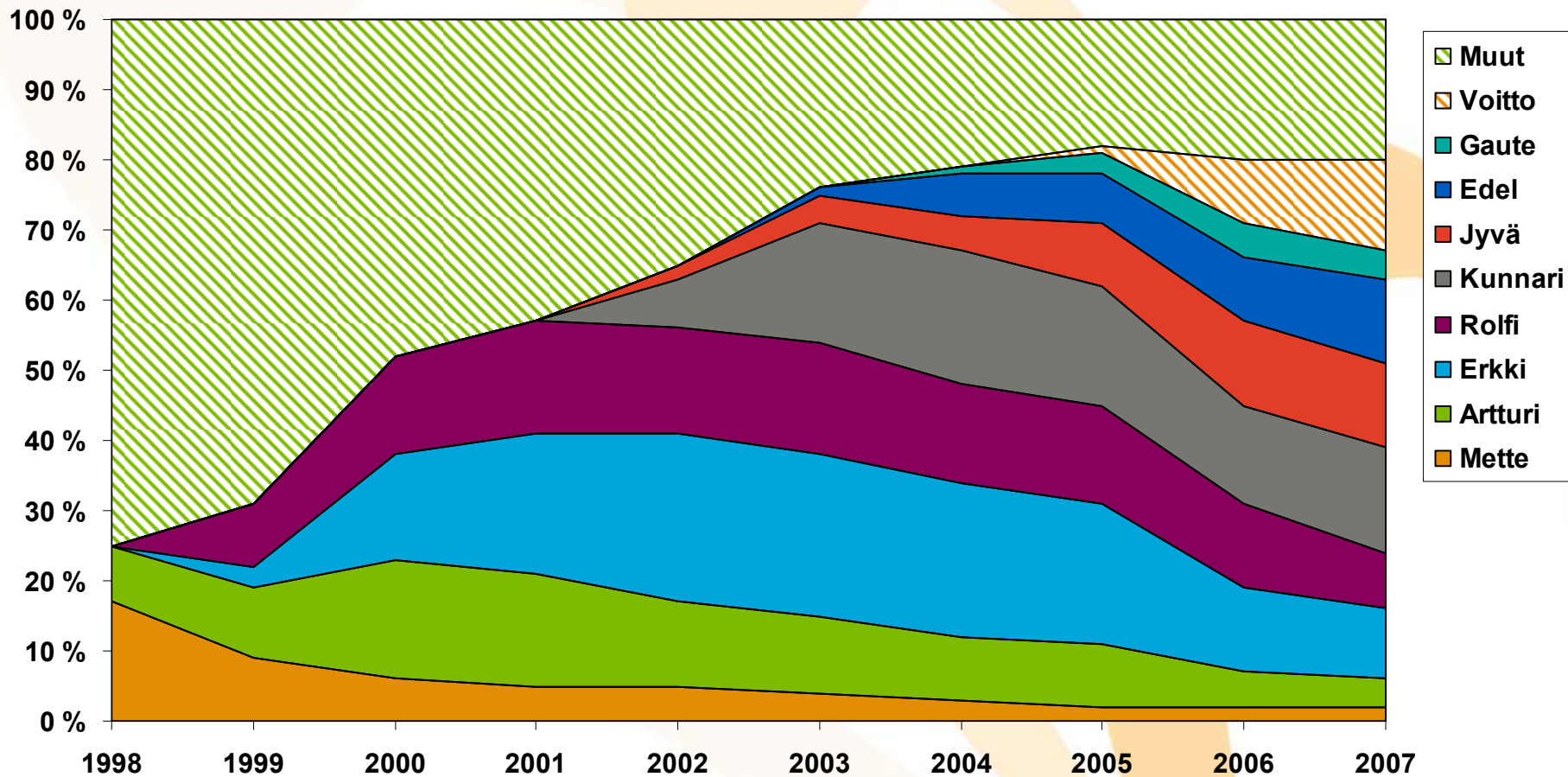


# OHRAN SEULONTA LAJIKKEITTAIN 2007

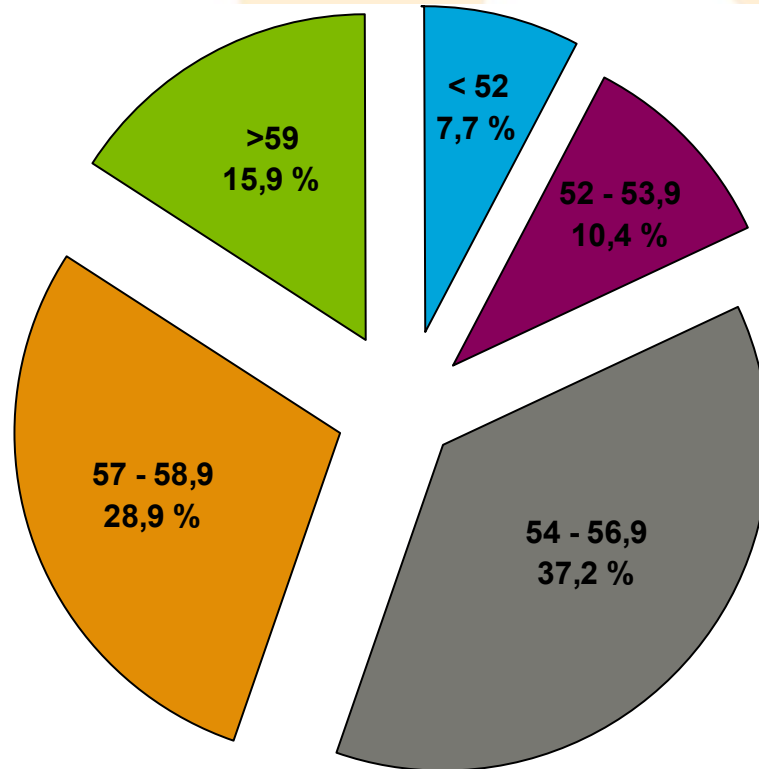


# OHRALAJIKKEIDEN YLEISYYS NÄYTTEISTÄ %

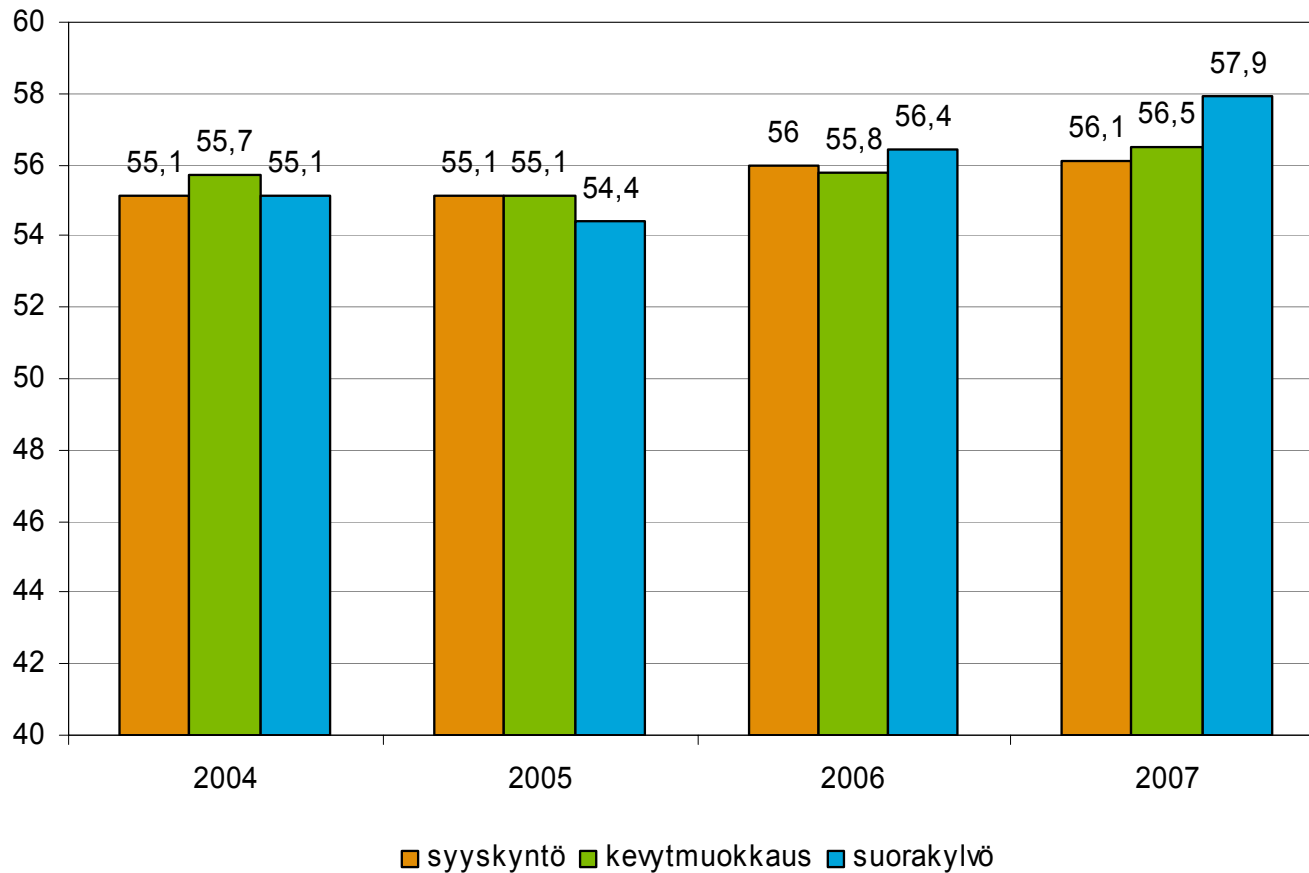
## 1998 - 2007



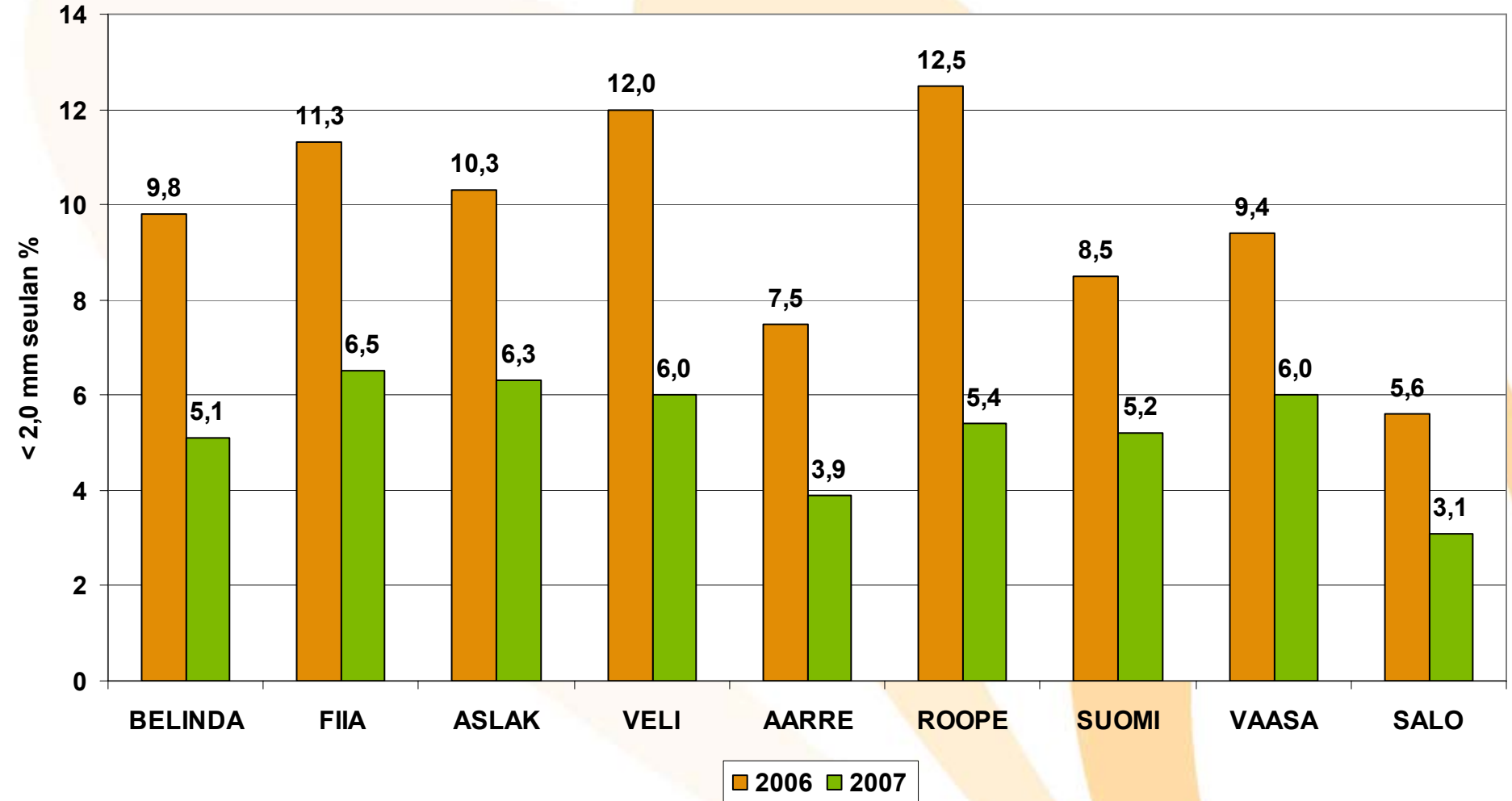
# KAURAN HEHTOLITRANPAINO (kg/hl) 2007



# Kauran hehtolitraino

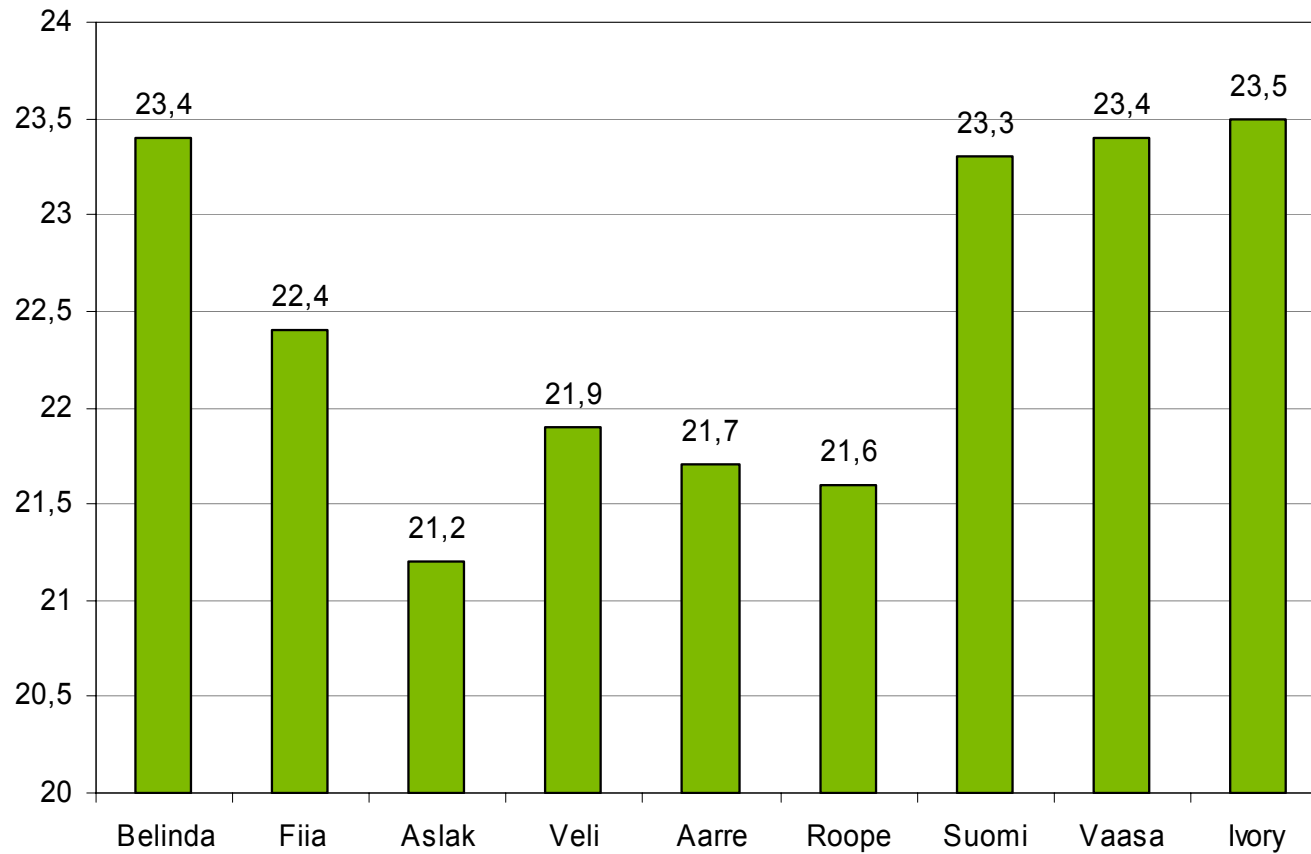


# KAURAN SEULONTA LAJIKKEITTAIN 2006 - 2007

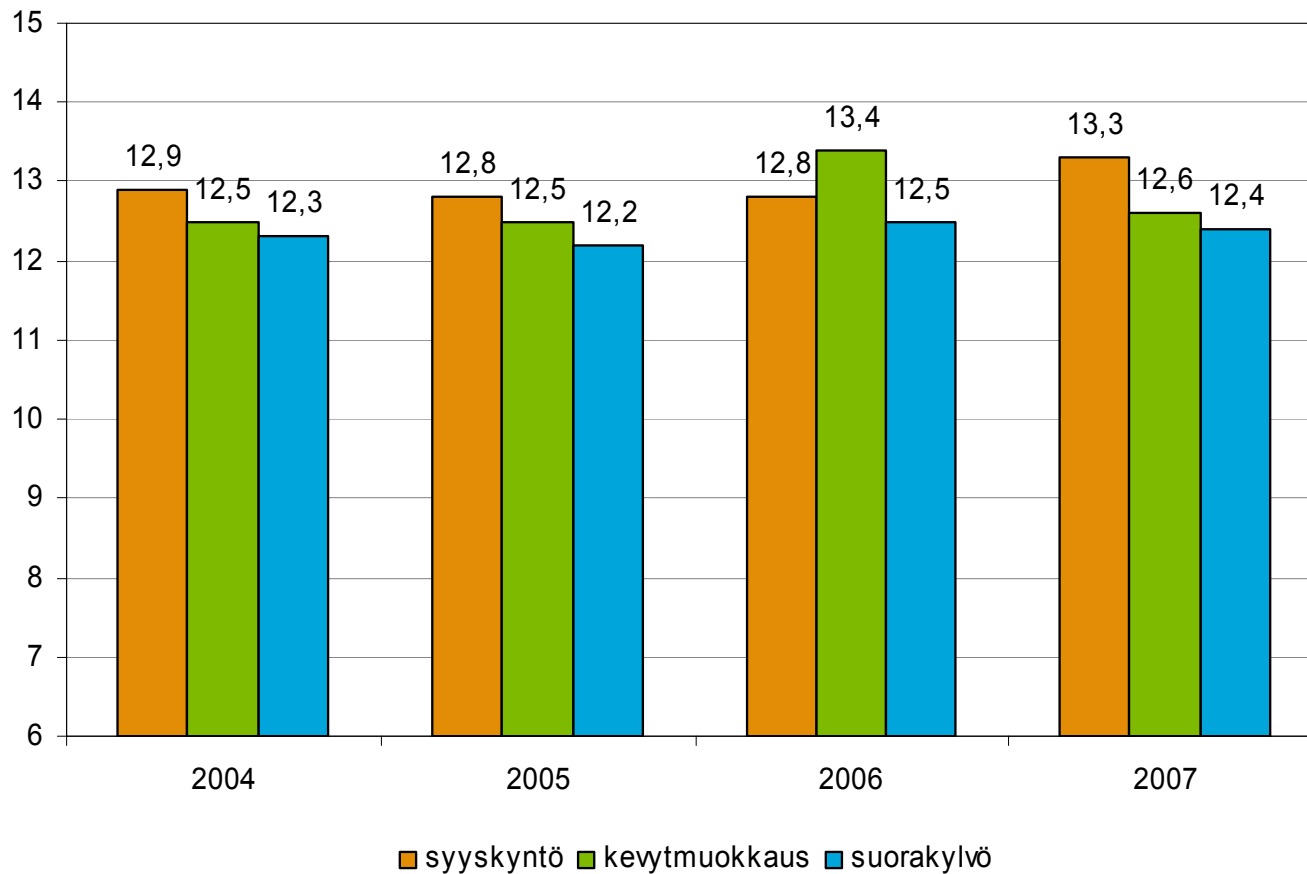




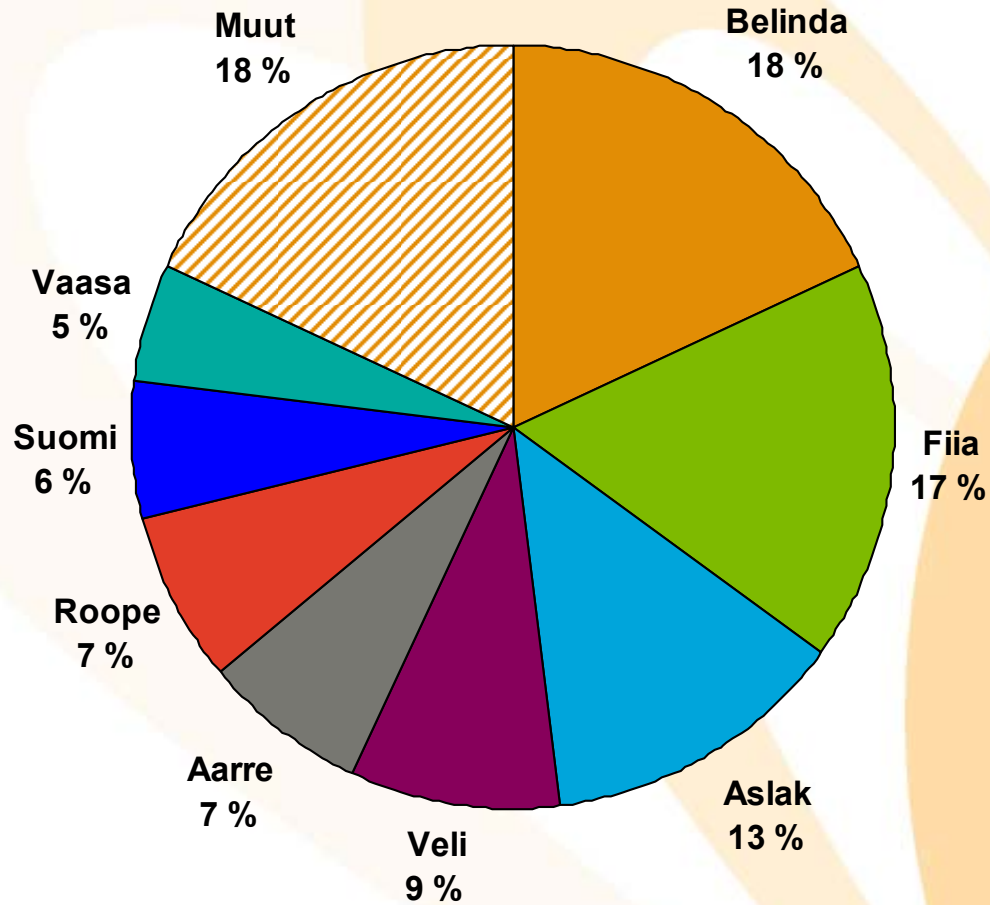
# Kaura kuoripitoisuus %



# Kauran valkuainen



# KAURALAJIKKEIDEN YLEISYYS 2007



# KAURALAJIKKEIDEN YLEISYYS NÄYTTEISTÄ %

## 1998 - 2007

